

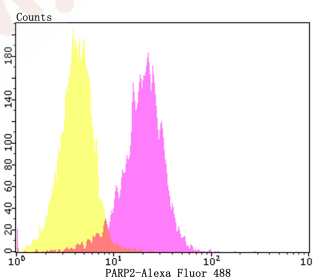
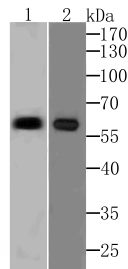
Anti-PARP2 Antibody (2T560)

Product Details

Ig Type:	IgG
Reactivity:	Human,Mouse,Rat
Conjugation:	Unconjugated
Molecular Weight:	Theoretical: 66 kDa.
Clone:	2T560
Purification:	ProA affinity purified

Applications

1. Western blot analysis of PARP2 on SiHa and Raji cell lysates using anti-PARP2 at 1/500 dilution.
2. Flow cytometric analysis of SH-SY-5Y cells with PARP2 antibody at 1/50 dilution (Fuchsia) compared with an unlabelled control (cells without incubation with primary antibody; Yellow). Alexa Fluor 488-conjugated goat anti-rabbit IgG was used as the secondary antibody.



Application:	FCM,WB
Recommended	WB: 1:500-1000; FCM: 1:50-100

Properties

- Stability & Storage: Store at -20°C or -80°C for 12 months. Avoid repeated freeze-thaw cycles.
- Shipping: Shipping with blue ice.

Antigen Details

Immunogen:	Recombinant Protein: within the C-terminus of human PARP2
Antigen Species:	human
Uniprot ID:	Q9UGN5
Synonyms:	PARP-2;ADP-ribosyltransferase diphtheria toxin-like 2 (ARTD2);ADPRT2;Poly[ADP-ribose] synthase 2 (pADPRT-2);PARP2;Poly [ADP-ribose] polymerase 2;ADPRTL2;DNA ADP-ribosyltransferase PARP2;NAD(+) ADP-ribosyltransferase 2 (ADPRT-2);Protein poly-ADP-ribosyltransferase PARP2;hPARP-2

Research Background

Involved in the base excision repair (BER) pathway, by catalyzing the poly(ADP-ribosyl)ation of a limited number of acceptor proteins involved in chromatin architecture and in DNA metabolism. This modification follows DNA damages and appears as an obligatory step in a detection/signaling pathway leading to the reparation of DNA strand breaks. Mediates serine ADP-ribosylation of target proteins following interaction with HPF1; HPF1 conferring serine specificity.

Inhibitor · Natural Compounds · Compound Libraries · Recombinant Proteins

This product is for Research Use Only · Not for Human or Veterinary or Therapeutic Use

Tel:781-999-4286 E_mail:info@targetmol.com Address:34 Washington Street,Wellesley Hills,MA 02481