

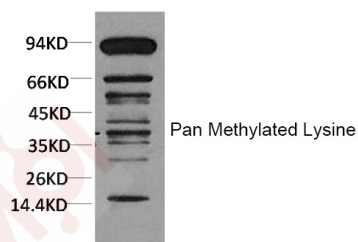
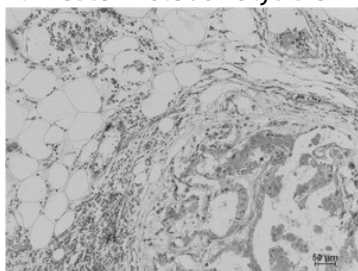
Anti-Pan-methyl-Lysine Antibody (7Q88)

Product Details

Conjugation:	Unconjugated
Clone:	7Q88
Purification:	The antibody was affinity-purified from antiserum by affinity-chromatography

Applications

- Verified Activity:
1. Immunohistochemical analysis of paraffin-embedded Human Breast Carcinoma using Pan Methylated Lysine Monoclonal Antibody.
 2. Western blot analysis of Hela using Pan Methylated Lysine Monoclonal Antibody.



Application:	IHC,WB
Recommended	WB: 1:1000-2000; IHC: 1:200-500

Properties

Stability & Storage:	Store at -20°C or -80°C for 12 months. Avoid repeated freeze-thaw cycles.
Shipping:	Shipping with blue ice.

Antigen Details

Immunogen:	Conjugated Protein
Synonyms:	Pan-methyl-K;Pan-Me-K;K-panmethylated;Pan-Me-Lys

Inhibitor · Natural Compounds · Compound Libraries · Recombinant Proteins

This product is for Research Use Only. Not for Human or Veterinary or Therapeutic Use

Tel:781-999-4286 E_mail:info@targetmol.com Address:34 Washington Street,Wellesley Hills,MA 02481