

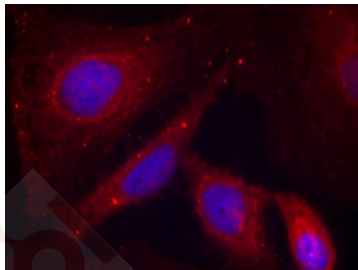
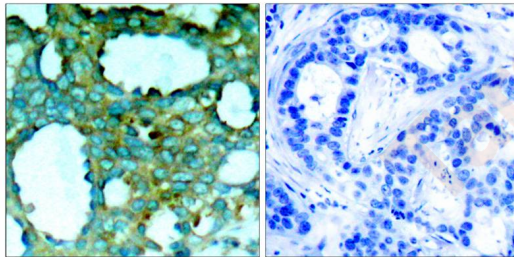
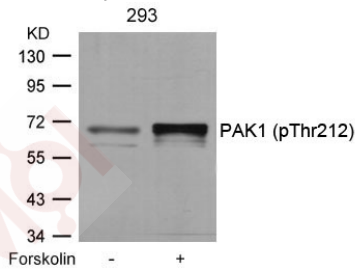
Anti-Phospho-PAK1 (Thr212) Polyclonal Antibody

Product Details

Ig Type:	IgG
Reactivity:	Human,Mouse,Rat
Conjugation:	Unconjugated
Purification:	Antibodies were produced by immunizing rabbits with synthetic phosphopeptide and KLH conjugates. Antibodies were purified by affinity-chromatography using epitope-specific phosphopeptide. Non-phospho specific antibodies were removed by chromatography using non-phosphopeptide.

Applications

- Verified Activity:
1. Western blot analysis of extracts from 293 cells untreated or treated with forskolin using PAK1 (Phospho-Thr212) Antibody TMAC-03050.
 2. Immunohistochemical analysis of paraffin-embedded human breast carcinoma tissue using PAK1 (Phospho-Thr212) Antibody TMAC-03050 (left) or the same antibody preincubated with blocking peptide (right).
 3. Immunofluorescence staining of methanol-fixed Hela cells using PAK1 (Phospho-Thr212) Antibody TMAC-03050.



Application: IF,IHC,WB

Properties

Stability & Storage: Store at 2°C-8°C for 1 month. Store at -20°C or -80°C for 12 months. Avoid repeated freeze-thaw cycles.

Shipping: Shipping with blue ice.

Antigen Details

Immunogen: Peptide sequence around phosphorylation site of threonine 212 (P-V-T(p)-P-T) derived from Human PAK1

Antigen Species: human

Uniprot ID: Q13153

Synonyms: PAK1 (p-Thr212);PAK1 (p-T212);p-PAK1 (T212);p-PAK1 (Thr212)

Research Background

The activated kinase acts on a variety of targets. Likely to be the GTPase effector that links the Rho-related GTPases to the JNK MAP kinase pathway. Activated by CDC42 and RAC1. Involved in dissolution of stress fibers and reorganization of focal complexes. Involved in regulation of microtubule biogenesis through phosphorylation of TBCB. Activity is inhibited in cells undergoing apoptosis, potentially due to binding of CDC2L1 and CDC2L2.

Inhibitor · Natural Compounds · Compound Libraries · Recombinant Proteins

This product is for Research Use Only · Not for Human or Veterinary or Therapeutic Use

Tel:781-999-4286 E_mail:info@targetmol.com Address:34 Washington Street,Wellesley Hills,MA 02481