

Anti-Phospho-RPS6KA1 (Ser352) Polyclonal Antibody

Product Details

Ig Type: IgG

Reactivity: Human, Mouse, Rat

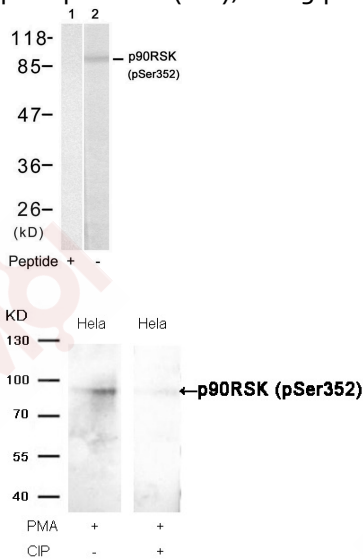
Conjugation: Unconjugated

Purification: Antibodies were produced by immunizing rabbits with synthetic phosphopeptide and KLH conjugates. Antibodies were purified by affinity-chromatography using epitope-specific phosphopeptide. Non-phospho specific antibodies were removed by chromatography using non-phosphopeptide.

Applications

Verified Activity:

- Western blot analysis of extracts from HUVEC cells using p90RSK (Phospho-Ser352) Antibody TMAC-03042 (Lane 2) and the same antibody preincubated with blocking peptide (Lane 1).
- Western blot analysis of extracts from HeLa cells, treated with PMA or calf intestinal phosphatase (CIP), using p90RSK (Phospho-Ser352) Antibody TMAC-03042.



Application: WB

Properties

Stability & Storage: Store at 2°C-8°C for 1 month. Store at -20°C or -80°C for 12 months. Avoid repeated freeze-thaw cycles.

Shipping: Shipping with blue ice.

Antigen Details

| | |
|------------------|---|
| Immunogen: | Peptide sequence around phosphorylation site of serine 352 (R-D-S(p)-P-G) derived from Human p90RSK |
| Antigen Species: | human |
| Uniprot ID: | Q15418 |
| Synonyms: | EC 2.7.11.1;S6K alpha 1;S6K-alpha-1;dj590P13.1;ribosomal protein S6 kinase;Ribosomal protein S6 kinase alpha 1;MAP kinase activated protein kinase 1a;RSK 1;Phospho-RPS6KA1 (S352);KS6A1_HUMAN;Ribosomal S6 kinase 1;rps6ka;RSK 1 p90;MAPKAPK-1a;Ribosomal protein S6 kinase 90kD polypeptide 1;RPS6K1 alpha;MGC79981;OTTHUMP00000004113;RPS6KA1 (p-Ser352);p90RSK1;Mitogen-activated protein kinase-activated protein kinase 1A;HU1;90 kDa ribosomal protein S6 kinase 1;pp90RSK1;polypeptide 1;MAPKAPK1A;MAPKAP kinase 1a;RPS6KA1 (p-S352);Ribosomal protein S6 kinase polypeptide 1;p90 RSK1;HU 1;RSK1p90;90kD;RSK;p90S6K;p-RPS6KA1 (S352);RSK1;p-RPS6KA1 (Ser352) |

Research Background

Serine/threonine kinase that may play a role in mediating the growth-factor and stress induced activation of the transcription factor CREB.

Inhibitor · Natural Compounds · Compound Libraries · Recombinant Proteins

This product is for Research Use Only · Not for Human or Veterinary or Therapeutic Use

Tel:781-999-4286 E_mail:info@targetmol.com Address:34 Washington Street,Wellesley Hills,MA 02481