

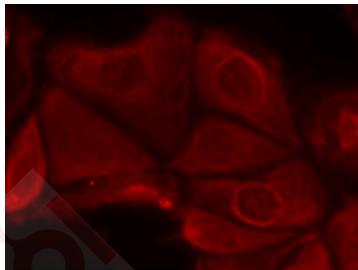
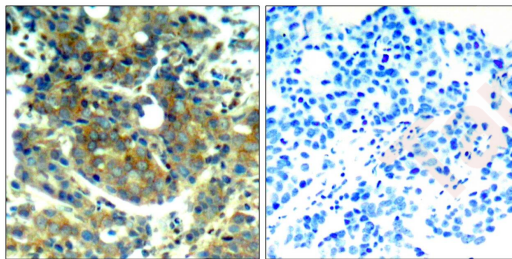
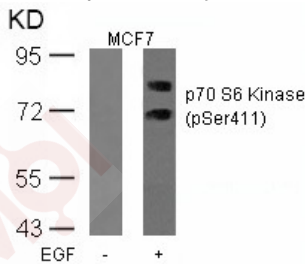
## Anti-Phospho-S6K1/RPS6KB1 (Ser411) Polyclonal Antibody

### Product Details

Ig Type:	IgG
Reactivity:	Human,Mouse,Rat
Conjugation:	Unconjugated
Purification:	Antibodies were produced by immunizing rabbits with synthetic phosphopeptide and KLH conjugates. Antibodies were purified by affinity-chromatography using epitope-specific phosphopeptide. Non-phospho specific antibodies were removed by chromatography using non-phosphopeptide.

### Applications

- Verified Activity:
1. Western blot analysis of extracts from MCF cells untreated or treated with EGF using p70 S6 Kinase (Phospho-Ser411) Antibody TMAC-03031.
  2. Immunohistochemical analysis of paraffin-embedded human breast carcinoma tissue using p70 S6 Kinase (Phospho-Ser411) Antibody TMAC-03031 (left) or the same antibody preincubated with blocking peptide (right).
  3. Immunofluorescence staining of methanol-fixed MCF7 cells using p70 S6 Kinase (Phospho-Ser411) Antibody TMAC-03031.



Application: IF,IHC,WB

### Properties

**Stability & Storage:** Store at 2°C-8°C for 1 month. Store at -20°C or -80°C for 12 months. Avoid repeated freeze-thaw cycles.

**Shipping:** Shipping with blue ice.

---

### Antigen Details

**Immunogen:** Peptide sequence around phosphorylation site of serine 411 (I-R-S(p)-P-R) derived from Human p70 S6 Kinase

**Antigen Species:** human

**Uniprot ID:** P23443

**Synonyms:** p-S6K1/RPS6KB1 (S411);p-S6K1/RPS6KB1 (Ser411);S6K1/RPS6KB1 (p-S411);S6K1/RPS6KB1 (p-Ser411)

---

### Research Background

Phosphorylates specifically ribosomal protein S6 in response to insulin or several classes of mitogens. Promotes protein synthesis by phosphorylating PDCD4 at 'Ser-67' and targeting it for degradation.

**Inhibitor · Natural Compounds · Compound Libraries · Recombinant Proteins**

This product is for Research Use Only · Not for Human or Veterinary or Therapeutic Use

Tel:781-999-4286 E\_mail:info@targetmol.com Address:34 Washington Street,Wellesley Hills,MA 02481