

Anti-S6K1/RPS6KB1 Antibody (2X637)

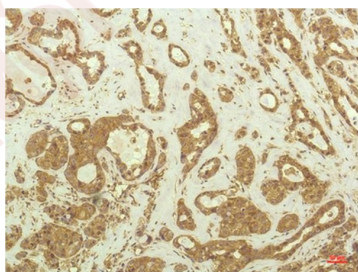
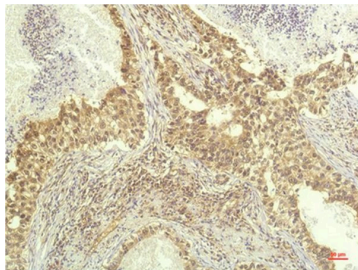
Product Details

Ig Type:	IgG1
Reactivity:	Human,Mouse,Rat
Conjugation:	Unconjugated
Molecular Weight:	Theoretical: 70, 85 kDa.
Clone:	2X637

Applications

Verified Activity:

1. Immunohistochemical analysis of paraffin-embedded Human Lung Carcinoma Tissue using P70 S6 Kinase Mouse mAb diluted at 1:200.
2. Immunohistochemical analysis of paraffin-embedded Human Breast Carcinoma Tissue using P70 S6 Kinase Mouse mAb diluted at 1:200.



Application:	IHC
Recommended	IHC: 1:100-200

Properties

Stability & Storage:	Store at -20°C or -80°C for 12 months. Avoid repeated freeze-thaw cycles.
Shipping:	Shipping with blue ice.

Antigen Details

Immunogen: Recombinant Protein
Uniprot ID: P23443
Synonyms: RPS6KB1;PS6K;p70 S6KA;S6K1;S6K-beta-1;S6K- β -1;S6K;p70- α ;p70-alpha;STK14A;ribosomal protein S6 kinase, polypeptide 1;p70(S6K)-alpha;p70(S6K)- α ;p70-S6K

Inhibitor · Natural Compounds · Compound Libraries · Recombinant Proteins

This product is for Research Use Only · Not for Human or Veterinary or Therapeutic Use

Tel:781-999-4286 E_mail:info@targetmol.com Address:34 Washington Street,Wellesley Hills,MA 02481