

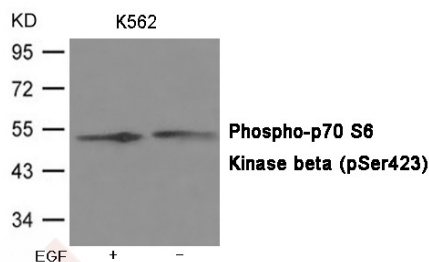
## Anti-Phospho-p70 S6 Kinase (Ser423) Polyclonal Antibody 2

### Product Details

Ig Type:	IgG
Reactivity:	Human
Conjugation:	Unconjugated
Molecular Weight:	Actual: 53 kDa.
Purification:	Antibodies were produced by immunizing rabbits with synthetic phosphopeptide and KLH conjugates. Antibodies were purified by affinity-chromatography using epitope-specific phosphopeptide. Non-phospho specific antibodies were removed by chromatography using non-phosphopeptide.

### Applications

Verified Activity: 1. Western blot analysis of extracts from K562 cells untreated or treated with EGF, using Phospho-p70 S6 Kinase beta (Phospho-Ser423) Antibody TMAC-03021.



Application: WB

### Properties

Stability & Storage: Store at  $-20^{\circ}\text{C}$  or  $-80^{\circ}\text{C}$  for 12 months. Avoid repeated freeze-thaw cycles.

Shipping: Shipping with blue ice.

### Antigen Details

Immunogen:	Peptide sequence around phosphorylation site of Serine 423 (P-V-S(p)-P-L) derived from Human p70 S6 Kinase beta
Antigen Species:	human
Uniprot ID:	Q9UBS0
Synonyms:	p70 S6 Kinase (p-S423);p-p70 S6 Kinase (Ser423);p70 S6 Kinase (p-Ser423);p-p70 S6 Kinase (S423)

### Research Background

This gene encodes a member of the RSK (ribosomal S6 kinase) family of serine/threonine kinases. This kinase contains 2 nonidentical kinase catalytic domains and phosphorylates the S6 ribosomal protein and eucaryotic translation initiation factor 4B (eIF4B).

**Inhibitor · Natural Compounds · Compound Libraries · Recombinant Proteins**

This product is for Research Use Only · Not for Human or Veterinary or Therapeutic Use

Tel:781-999-4286 E\_mail:info@targetmol.com Address:34 Washington Street,Wellesley Hills,MA 02481