

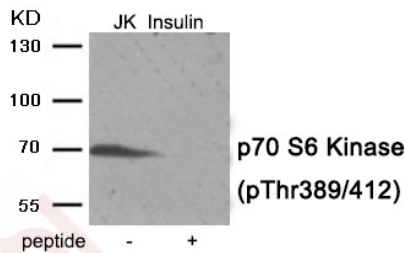
## Anti-Phospho-S6K1/RPS6KB1 (Thr389/412) Polyclonal Antibody

### Product Details

Ig Type:	IgG
Reactivity:	Human,Mouse,Rat
Conjugation:	Unconjugated
Molecular Weight:	Actual: 70 kDa.
Purification:	Antibodies were produced by immunizing rabbits with synthetic phosphopeptide and KLH conjugates. Antibodies were purified by affinity-chromatography using epitope-specific phosphopeptide. Non-phospho specific antibodies were removed by chromatography using non-phosphopeptide.

### Applications

**Verified Activity:** 1. Western blot analysis of extracts from Jurkat cells treated with Insulin using Phospho-p70 S6 Kinase (Thr389/412) antibody TMAC-03020. The lane on the right is treated with the antigen-specific peptide.



Application:	WB
Recommended	WB: 1:500-1000

### Properties

Stability & Storage:	Store at -20°C or -80°C for 12 months. Avoid repeated freeze-thaw cycles.
Shipping:	Shipping with blue ice.

### Antigen Details

Immunogen:	Peptide sequence around phosphorylation site of threonine389/412(G-F-T(p)-Y-V) derived from Human p70 S6 Kinase
Antigen Species:	human
Uniprot ID:	P23443
Synonyms:	S6K1/RPS6KB1 (p-Thr389/412);S6K1/RPS6KB1 (p-T389/412);p-S6K1/RPS6KB1 (Thr389/412);p-S6K1/RPS6KB1 (T389/412)

### Research Background

Phosphorylates specifically ribosomal protein S6 in response to insulin or several classes of mitogens. Promotes protein synthesis by phosphorylating PDCD4 at 'Ser-67' and targeting it for degradation.

**Inhibitor · Natural Compounds · Compound Libraries · Recombinant Proteins**

This product is for Research Use Only · Not for Human or Veterinary or Therapeutic Use

Tel:781-999-4286 E\_mail:info@targetmol.com Address:34 Washington Street,Wellesley Hills,MA 02481