

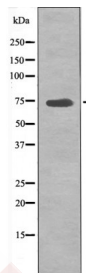
Anti-Phospho-S6K1/RPS6KB1 (Ser427) Polyclonal Antibody 2

Product Details

Ig Type:	IgG
Reactivity:	Human,Mouse,Rat
Conjugation:	Unconjugated
Molecular Weight:	Theoretical: 70 kDa.
Purification:	Antibodies were produced by immunizing rabbits with synthetic phosphopeptide and KLH conjugates. Antibodies were purified by affinity-chromatography using epitope-specific phosphopeptide. Non-phospho specific antibodies were removed by chromatography using non-phosphopeptide.

Applications

Verified Activity: 1. Western blot analysis p70 S6 Kinase (Phospho-Ser427) using HeLa whole cell lysates.



Application: WB
Recommended WB: 1:1000

Properties

Stability & Storage: Store at -20°C or -80°C for 12 months. Avoid repeated freeze-thaw cycles.
Shipping: Shipping with blue ice.

Antigen Details

Immunogen: A synthesized phosphopeptide: human p70 S6 Kinase around the phosphorylation site of Ser427
Antigen Species: human
Uniprot ID: P23443
Synonyms: p-S6K1/RPS6KB1 (S427);S6K1/RPS6KB1 (p-S427);S6K1/RPS6KB1 (p-Ser427);p-S6K1/RPS6KB1 (Ser427)

Inhibitor · Natural Compounds · Compound Libraries · Recombinant Proteins

This product is for Research Use Only. Not for Human or Veterinary or Therapeutic Use

Tel:781-999-4286 E_mail:info@targetmol.com Address:34 Washington Street,Wellesley Hills,MA 02481