

## Anti-Phospho-p63 (Ser455) Polyclonal Antibody

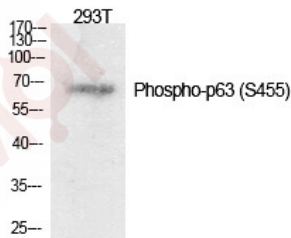
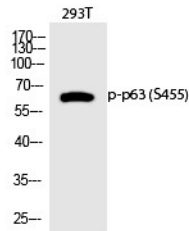
### Product Details

Ig Type:	IgG
Reactivity:	Human
Conjugation:	Unconjugated
Molecular Weight:	Actual: 70 kDa.
Purification:	The antibody was affinity-purified from rabbit antiserum by affinity-chromatography using epitope-specific immunogen.

### Applications

#### Verified Activity:

1. Western Blot analysis of 293T cells using Phospho-p63 (S455) Polyclonal Antibody.
2. Western Blot analysis of 293T cells using Phospho-p63 (S455) Polyclonal Antibody.



Application:	ELISA,IHC,WB
Recommended	WB: 1:500-2000; IHC: 1:100-300; ELISA: 1:20000

### Properties

Stability & Storage:	Store at -20°C or -80°C for 12 months. Avoid repeated freeze-thaw cycles.
Shipping:	Shipping with blue ice.

Antigen Details

Immunogen: A synthesized phosphopeptide: human p63 around the phosphorylation site of S455  
Antigen Species: human  
Uniprot ID: Q9H3D4  
Synonyms: p63 (p-S455);p-p63 (Ser455);p63 (p-Ser455);p-p63 (S455)

**Inhibitor · Natural Compounds · Compound Libraries · Recombinant Proteins**

This product is for Research Use Only · Not for Human or Veterinary or Therapeutic Use

Tel:781-999-4286 E\_mail:info@targetmol.com Address:34 Washington Street,Wellesley Hills,MA 02481