

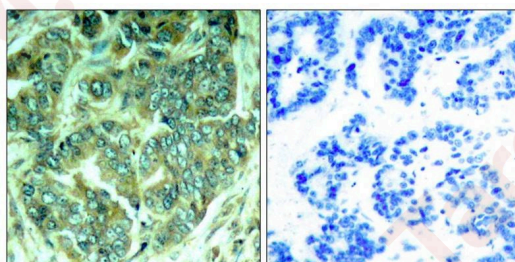
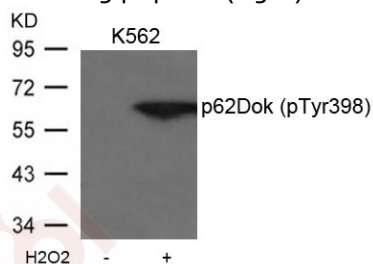
## Anti-Phospho-p62Dok (Tyr398) Polyclonal Antibody

### Product Details

Ig Type:	IgG
Reactivity:	Human
Conjugation:	Unconjugated
Purification:	Antibodies were produced by immunizing rabbits with synthetic phosphopeptide and KLH conjugates. Antibodies were purified by affinity-chromatography using epitope-specific phosphopeptide. Non-phospho specific antibodies were removed by chromatography using non-phosphopeptide.

### Applications

- Verified Activity:
- Western blot analysis of extracts from K562 cells untreated or treated with H<sub>2</sub>O<sub>2</sub> using p62Dok (phospho-Tyr398) Antibody TMAC-03009.
  - Immunohistochemical analysis of paraffin-embedded human breast carcinoma tissue using p62Dok (Phospho-Tyr398) Antibody TMAC-03009 (left) or the same antibody preincubated with blocking peptide (right).



Application: IHC,WB

### Properties

Stability & Storage:	Store at 2°C-8°C for 1 month. Store at -20°C or -80°C for 12 months. Avoid repeated freeze-thaw cycles.
Shipping:	Shipping with blue ice.

### Antigen Details

Immunogen:	Peptide sequence around phosphorylation site of tyrosine 398 (E-G-Y(p)-E-L) derived from Human p62Dok
Antigen Species:	human
Uniprot ID:	Q99704
Synonyms:	p62Dok (p-Y398);p-p62Dok (Y398);p-p62Dok (Tyr398);p62Dok (p-Tyr398)

---

### Research Background

DOK proteins are enzymatically inert adaptor or scaffolding proteins. They provide a docking platform for the assembly of multimolecular signaling complexes. DOK1 appears to be a negative regulator of the insulin signaling pathway. Modulates integrin activation by competing with talin for the same binding site on ITGB3.

**Inhibitor · Natural Compounds · Compound Libraries · Recombinant Proteins**

This product is for Research Use Only · Not for Human or Veterinary or Therapeutic Use

Tel:781-999-4286    E\_mail:info@targetmol.com    Address:34 Washington Street,Wellesley Hills,MA 02481