

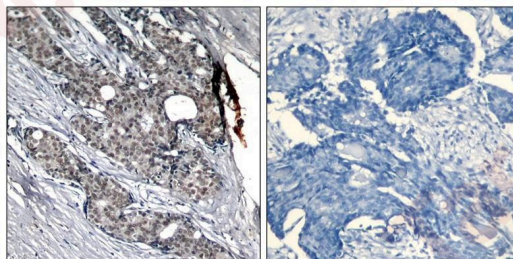
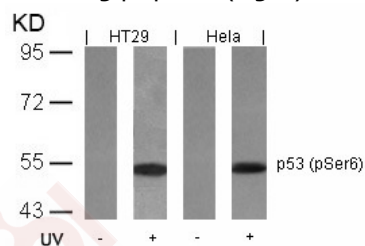
Anti-Phospho-p53 (Ser6) Polyclonal Antibody

Product Details

Ig Type:	IgG
Reactivity:	Human,Monkey
Conjugation:	Unconjugated
Purification:	Antibodies were produced by immunizing rabbits with synthetic phosphopeptide and KLH conjugates. Antibodies were purified by affinity-chromatography using epitope-specific phosphopeptide. Non-phospho specific antibodies were removed by chromatography using non-phosphopeptide.

Applications

- Verified Activity:
- Western blot analysis of extracts from HT29 and HeLa cells untreated or treated with UV using p53 (Phospho-Ser6) Antibody TMAC-03000.
 - Immunohistochemical analysis of paraffin-embedded human breast carcinoma tissue using p53 (Phospho-Ser6) Antibody TMAC-03000 (left) or the same antibody preincubated with blocking peptide (right).



Application: ELISA,IF,IHC,IP,WB

Properties

Stability & Storage:	Store at 2°C-8°C for 1 month. Store at -20°C or -80°C for 12 months. Avoid repeated freeze-thaw cycles.
Shipping:	Shipping with blue ice.

Antigen Details

Immunogen:	Peptide sequence around phosphorylation site of serine 6 (P-Q-S(p)-D-P) derived from Human p53
Antigen Species:	human
Uniprot ID:	P04637
Synonyms:	p53 (p-Ser6);p-p53 (S6);p-p53 (Ser6);p53 (p-S6)

Research Background

Acts as a tumor suppressor in many tumor types; induces growth arrest or apoptosis depending on the physiological circumstances and cell type. Involved in cell cycle regulation as a trans-activator that acts to negatively regulate cell division by controlling a set of genes required for this process. One of the activated genes is an inhibitor of cyclin-dependent kinases. Apoptosis induction seems to be mediated either by stimulation of BAX and FAS antigen expression, or by repression of Bcl-2 expression. Implicated in Notch signaling cross-over.

Inhibitor · Natural Compounds · Compound Libraries · Recombinant Proteins

This product is for Research Use Only · Not for Human or Veterinary or Therapeutic Use

Tel:781-999-4286 E_mail:info@targetmol.com Address:34 Washington Street,Wellesley Hills,MA 02481