

Anti-Phospho-p53 (Ser33) Polyclonal Antibody

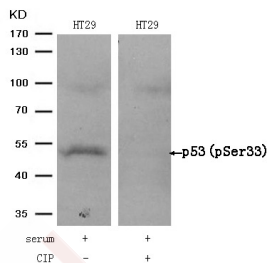
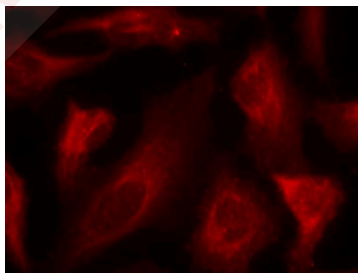
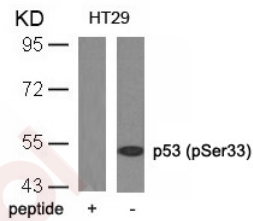
Product Details

Ig Type:	IgG
Reactivity:	Human
Conjugation:	Unconjugated
Purification:	Antibodies were produced by immunizing rabbits with synthetic phosphopeptide and KLH conjugates. Antibodies were purified by affinity-chromatography using epitope-specific phosphopeptide. Non-phospho specific antibodies were removed by chromatography using non-phosphopeptide.

Applications

Verified Activity:

- Western blot analysis of extracts from HT29 cells using p53 (Phospho-Ser33) Antibody TMAC-02997 and the same antibody preincubated with blocking peptide.
- Immunofluorescence staining of methanol-fixed Hela cells using p53 (Phospho-Ser33) Antibody TMAC-02997.
- Western blot analysis of extracts from HT29 cells, treated with serum or calf intestinal phosphatase (CIP), using p53 (Phospho-Ser33) Antibody TMAC-02997.



Application: IF, WB

A DRUG SCREENING EXPERT

Properties

Stability & Storage: Store at 2°C-8°C for 1 month. Store at -20°C or -80°C for 12 months. Avoid repeated freeze-thaw cycles.

Shipping: Shipping with blue ice.

Antigen Details

Immunogen: Peptide sequence around phosphorylation site of serine 33 (V-L-S(p)-P-L) derived from Human p53

Antigen Species: human

Uniprot ID: P04637

Synonyms: p-p53 (Ser33);p53 (p-Ser33);p-p53 (S33);p53 (p-S33)

Research Background

Acts as a tumor suppressor in many tumor types; induces growth arrest or apoptosis depending on the physiological circumstances and cell type. Involved in cell cycle regulation as a trans-activator that acts to negatively regulate cell division by controlling a set of genes required for this process. One of the activated genes is an inhibitor of cyclin-dependent kinases. Apoptosis induction seems to be mediated either by stimulation of BAX and FAS antigen expression, or by repression of Bcl-2 expression. Implicated in Notch signaling cross-over.

Inhibitor · Natural Compounds · Compound Libraries · Recombinant Proteins

This product is for Research Use Only · Not for Human or Veterinary or Therapeutic Use

Tel:781-999-4286 E_mail:info@targetmol.com Address:34 Washington Street,Wellesley Hills,MA 02481