

## Anti-Phospho-p53 (Ser315) Polyclonal Antibody

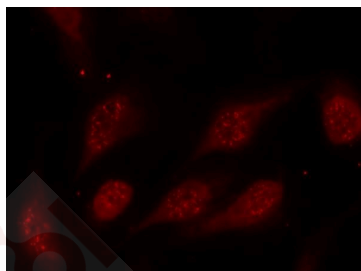
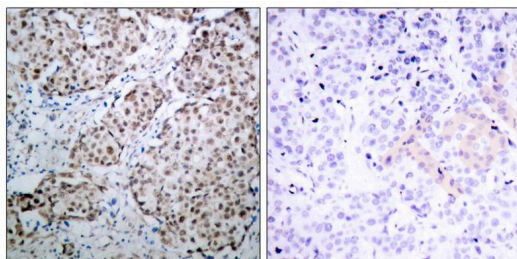
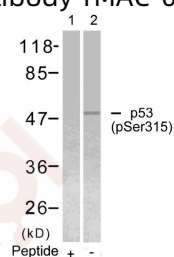
### Product Details

Ig Type:	IgG
Reactivity:	Human,Mouse,Rat
Conjugation:	Unconjugated
Purification:	Antibodies were produced by immunizing rabbits with synthetic phosphopeptide and KLH conjugates. Antibodies were purified by affinity-chromatography using epitope-specific phosphopeptide. Non-phospho specific antibodies were removed by chromatography using non-phosphopeptide.

### Applications

#### Verified Activity:

- Western blot analysis of extracts from Hela cells using p53 (Phospho-Ser315) Antibody TMAC-02996 (Lane 2) and the same antibody preincubated with blocking peptide (Lane1).
- Immunohistochemical analysis of paraffin-embedded human breast carcinoma tissue using p53 (Phospho-Ser315) Antibody TMAC-02996 (left) or the same antibody preincubated with blocking peptide (right).
- Immunofluorescence staining of methanol-fixed Hela cells using p53 (Phospho-Ser315) Antibody TMAC-02996.



Application: IF,IHC,WB

### Properties

**Stability & Storage:** Store at 2°C-8°C for 1 month. Store at -20°C or -80°C for 12 months. Avoid repeated freeze-thaw cycles.

**Shipping:** Shipping with blue ice.

---

### Antigen Details

**Immunogen:** Peptide sequence around phosphorylation site of serine 315 (S-S-S(p)-P-Q) derived from Human p53

**Antigen Species:** human

**Uniprot ID:** P04637

**Synonyms:** p-p53 (S315);p53 (p-S315);p53 (p-Ser315);p-p53 (Ser315)

---

### Research Background

Acts as a tumor suppressor in many tumor types; induces growth arrest or apoptosis depending on the physiological circumstances and cell type. Involved in cell cycle regulation as a trans-activator that acts to negatively regulate cell division by controlling a set of genes required for this process. One of the activated genes is an inhibitor of cyclin-dependent kinases. Apoptosis induction seems to be mediated either by stimulation of BAX and FAS antigen expression, or by repression of Bcl-2 expression. Implicated in Notch signaling cross-over.

**Inhibitor · Natural Compounds · Compound Libraries · Recombinant Proteins**

This product is for Research Use Only · Not for Human or Veterinary or Therapeutic Use

Tel:781-999-4286 E\_mail:info@targetmol.com Address:34 Washington Street,Wellesley Hills,MA 02481

---