

Anti-Phospho-p53 (Ser15) Polyclonal Antibody 2

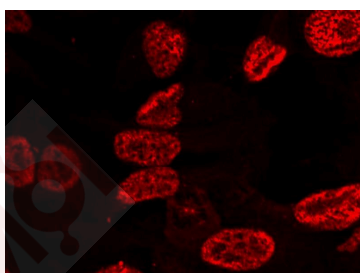
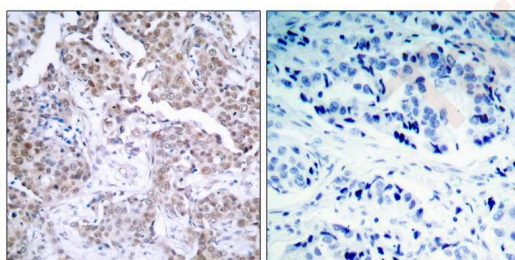
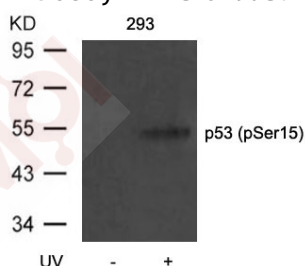
Product Details

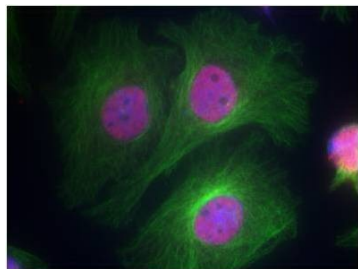
Ig Type:	IgG
Reactivity:	Human,Mouse,Rat
Conjugation:	Unconjugated
Purification:	Antibodies were produced by immunizing rabbits with synthetic phosphopeptide and KLH conjugates. Antibodies were purified by affinity-chromatography using epitope-specific phosphopeptide. Non-phospho specific antibodies were removed by chromatography using non-phosphopeptide.

Applications

1. Western blot analysis of extracts from 293 cells untreated or treated with UV using p53 (Phospho-Ser15) Antibody TMAC-02995.
2. Immunohistochemical analysis of paraffin-embedded human breast carcinoma tissue using p53 (Phospho-Ser15) Antibody TMAC-02995 (left) or the same antibody preincubated with blocking peptide (right).
3. Immunofluorescence staining of methanol-fixed Hela cells using p53(Phospho-Ser15) Antibody TMAC-02995.
4. Immunofluorescence staining of methanol-fixed Hela cells using p53 (Phospho-Ser15) Antibody TMAC-02995.

Verified Activity:





Application: ELISA,IF,IHC,IP,WB

Properties

Stability & Storage: Store at 2°C-8°C for 1 month. Store at -20°C or -80°C for 12 months. Avoid repeated freeze-thaw cycles.

Shipping: Shipping with blue ice.

Antigen Details

Immunogen: Peptide sequence around phosphorylation site of serine 15 (P-L-S(p)-Q-E) derived from Human p53

Antigen Species: human

Uniprot ID: P04637

Synonyms: p-p53 (Ser15);p53 (p-Ser15);p53 (p-S15);p-p53 (S15)

Research Background

Acts as a tumor suppressor in many tumor types; induces growth arrest or apoptosis depending on the physiological circumstances and cell type. Involved in cell cycle regulation as a trans-activator that acts to negatively regulate cell division by controlling a set of genes required for this process. One of the activated genes is an inhibitor of cyclin-dependent kinases. Apoptosis induction seems to be mediated either by stimulation of BAX and FAS antigen expression, or by repression of Bcl-2 expression. Implicated in Notch signaling cross-over.

Inhibitor · Natural Compounds · Compound Libraries · Recombinant Proteins

This product is for Research Use Only· Not for Human or Veterinary or Therapeutic Use

Tel:781-999-4286 E_mail:info@targetmol.com Address:34 Washington Street,Wellesley Hills,MA 02481
