

Anti-Mono-methyl-p53 (Lys370) Antibody (90469)

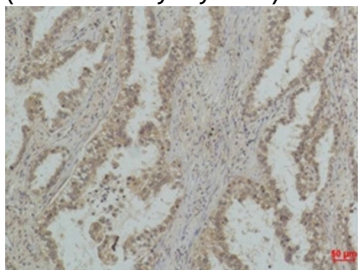
Product Details

Ig Type:	IgG1
Reactivity:	Human,Mouse,Rat
Conjugation:	Unconjugated
Molecular Weight:	Theoretical: 53 kDa.
Clone:	90469

Applications

Verified Activity:

1. Immunohistochemical analysis of paraffin-embedded Human Lung Carcinoma using P53 (Mono Methyl Lys370) Mouse mAb diluted at 1:500.



Application:	IHC
Recommended	IHC: 1:50-200

Properties

Stability & Storage:	Store at -20°C or -80°C for 12 months. Avoid repeated freeze-thaw cycles.
Shipping:	Shipping with blue ice.

Antigen Details

Immunogen:	A synthesized peptide
Synonyms:	Mono-Me-p53 (K370);Mono-Me-p53 (Lys370);p53K370-monomethylated;MonoMe-p53K370; p53K370me;Mono-methyl-p53 (K370)

Inhibitor · Natural Compounds · Compound Libraries · Recombinant Proteins

This product is for Research Use Only. Not for Human or Veterinary or Therapeutic Use

Tel:781-999-4286 E_mail:info@targetmol.com Address:34 Washington Street,Wellesley Hills,MA 02481