

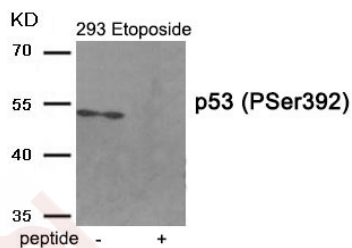
## Anti-Phospho-p53 (Ser392) Polyclonal Antibody

### Product Details

Ig Type:	IgG
Reactivity:	Human
Conjugation:	Unconjugated
Molecular Weight:	Actual: 53 kDa.
Purification:	Antibodies were produced by immunizing rabbits with synthetic phosphopeptide and KLH conjugates. Antibodies were purified by affinity-chromatography using epitope-specific phosphopeptide. Non-phospho specific antibodies were removed by chromatography using non-phosphopeptide.

### Applications

**Verified Activity:** 1. Western blot analysis of extracts from 293 cells treated with Etoposide using Phospho-p53 (Ser392) antibody TMAC-02985. The lane on the right is treated with the antigen-specific peptide.



Application:	WB
Recommended	WB: 1:500-1000

### Properties

Stability & Storage:	Store at -20°C or -80°C for 12 months. Avoid repeated freeze-thaw cycles.
Shipping:	Shipping with blue ice.

### Antigen Details

Immunogen:	Peptide sequence around phosphorylation site of serine 392 (P-D-S(p)-D) derived from Human p53
Antigen Species:	human
Uniprot ID:	P04637
Synonyms:	p53 (p-Ser392);p53 (p-S392);p-p53 (Ser392);p-p53 (S392)

### Research Background

Acts as a tumor suppressor in many tumor types; induces growth arrest or apoptosis depending on the physiological circumstances and cell type. Involved in cell cycle regulation as a trans-activator that acts to negatively regulate cell division by controlling a set of genes required for this process. One of the activated genes is an inhibitor of cyclin-dependent kinases. Apoptosis induction seems to be mediated either by stimulation of BAX and FAS antigen

expression, or by repression of Bcl-2 expression. Implicated in Notch signaling cross-over.

**Inhibitor · Natural Compounds · Compound Libraries · Recombinant Proteins**

This product is for Research Use Only · Not for Human or Veterinary or Therapeutic Use

Tel:781-999-4286 E\_mail:info@targetmol.com Address:34 Washington Street,Wellesley Hills,MA 02481