

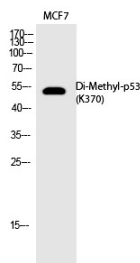
## Anti-Di-methyl-p53 (Lys370) Polyclonal Antibody

### Product Details

Ig Type:	IgG
Reactivity:	Human
Conjugation:	Unconjugated
Molecular Weight:	Actual: 53 kDa.
Purification:	The antibody was affinity-purified from rabbit antiserum by affinity-chromatography using epitope-specific immunogen.

### Applications

Verified Activity: 1. Western Blot analysis of MCF7 cells using Di-Methyl-p53 (K370) Polyclonal Antibody.



Application:	ELISA, WB
Recommended	WB: 1:500-2000; ELISA: 1:20000

### Properties

Stability & Storage:	Store at -20°C or -80°C for 12 months. Avoid repeated freeze-thaw cycles.
Shipping:	Shipping with blue ice.

### Antigen Details

Immunogen:	A synthesized peptide: human p53 around the di-methylation site of K370
Antigen Species:	human
Synonyms:	Di-methyl-p53 (K370); p53K370me2; DiMe-p53K370; Di-Me-p53 (K370); p53K370-dimethylated; Di-Me-p53 (Lys370)

**Inhibitor · Natural Compounds · Compound Libraries · Recombinant Proteins**

This product is for Research Use Only. Not for Human or Veterinary or Therapeutic Use

Tel: 781-999-4286 E\_mail: info@targetmol.com Address: 34 Washington Street, Wellesley Hills, MA 02481