

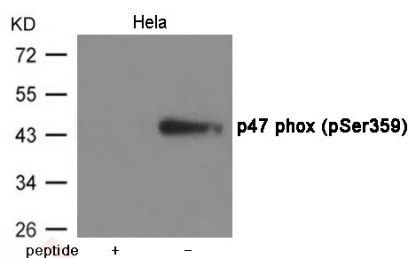
## Anti-Phospho-NCF1 (Ser359) Polyclonal Antibody

## Product Details

Ig Type:	IgG
Reactivity:	Human
Conjugation:	Unconjugated
Molecular Weight:	Actual: 45 kDa.
Purification:	Antibodies were produced by immunizing rabbits with synthetic phosphopeptide and KLH conjugates. Antibodies were purified by affinity-chromatography using epitope-specific phosphopeptide. Non-phospho specific antibodies were removed by chromatography using non-phosphopeptide.

## Applications

Verified Activity: 1. Western blot analysis of extracts from HeLa cells using p47 phox (Phospho-Ser359) Antibody TMAC-02969. The lane on the left is treated with the antigen-specific peptide.



Application: WB

## Properties

Stability & Storage: Store at -20°C or -80°C for 12 months. Avoid repeated freeze-thaw cycles.

Shipping: Shipping with blue ice.

## Antigen Details

Immunogen:	Peptide sequence around phosphorylation site of Serine 359 (Q-R-S(p)-K-P) derived from Human p47 phox
Antigen Species:	Human
Uniprot ID:	P14598
Synonyms:	NCF1 (p-S359);NCF1 (p-Ser359);p-NCF1 (S359);p-NCF1 (Ser359)

## Research Background

NCF2, NCF1, and a membrane bound cytochrome b558 are required for activation of the latent NADPH oxidase (necessary for superoxide production).

**Inhibitor · Natural Compounds · Compound Libraries · Recombinant Proteins**

This product is for Research Use Only. Not for Human or Veterinary or Therapeutic Use

Tel:781-999-4286 E\_mail:info@targetmol.com Address:34 Washington Street,Wellesley Hills,MA 02481