

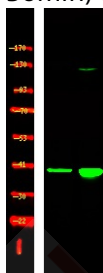
Anti-Phospho-p38- γ/δ (Tyr185/182) Polyclonal Antibody

Product Details

Ig Type:	IgG
Reactivity:	Human,Mouse,Rat
Conjugation:	Unconjugated
Molecular Weight:	Theoretical: 43 kDa.
Purification:	Antibodies were produced by immunizing rabbits with synthetic phosphopeptide and KLH conjugates. Antibodies were purified by affinity-chromatography using epitope-specific phosphopeptide. Non-phospho specific antibodies were removed by chromatography using non-phosphopeptide.

Applications

Verified Activity: 1. Western Blot analysis of lysates of 1. Hela cell and 2. Hela cell treated with 100ng/mL LPS for 30min, using primary antibody at 1:1000 dilution.



Application:	WB
Recommended	WB: 1:1000

Properties

Stability & Storage:	Store at -20°C or -80°C for 12 months. Avoid repeated freeze-thaw cycles.
Shipping:	Shipping with blue ice.

Antigen Details

Immunogen:	A synthesized phosphopeptide: human p38- γ/δ around the phosphorylation site of Tyr185/182
Antigen Species:	human
Synonyms:	p38- γ/δ (p-Y185/182);p-p38- γ/δ (Tyr185/182);p-p38- γ/δ (Y185/182);p38- γ/δ (p-Tyr185/182)

Inhibitor · Natural Compounds · Compound Libraries · Recombinant Proteins

This product is for Research Use Only. Not for Human or Veterinary or Therapeutic Use

Tel:781-999-4286 E_mail:info@targetmol.com Address:34 Washington Street,Wellesley Hills,MA 02481