

Anti-P2Y6 Antibody (7J344)

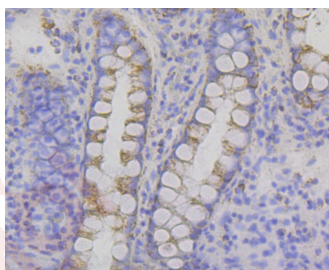
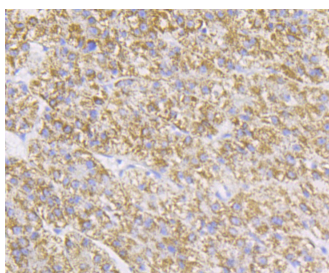
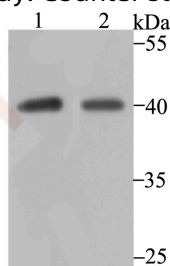
Product Details

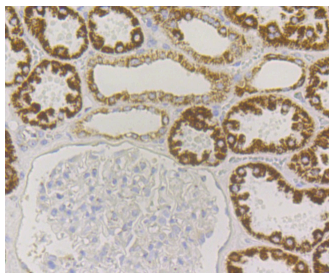
Ig Type:	IgG
Reactivity:	Human
Conjugation:	Unconjugated
Molecular Weight:	Theoretical: 36 kDa.
Clone:	7J344
Purification:	ProA affinity purified

Applications

Verified Activity:

1. Western blot analysis of P2Y6 on SK-Br-3 (1) and A549 (2) cell lysate using anti-P2Y6 antibody at 1/1,000 dilution.
2. Immunohistochemical analysis of paraffin-embedded human liver tissue using anti-P2Y6 antibody. Counter stained with hematoxylin.
3. Immunohistochemical analysis of paraffin-embedded human colon tissue using anti-P2Y6 antibody. Counter stained with hematoxylin.
4. Immunohistochemical analysis of paraffin-embedded human kidney tissue using anti-P2Y6 antibody. Counter stained with hematoxylin.





Application: ICC,IHC,IP,WB

Recommended WB: 1:500-2000; IHC: 1:50-200; ICC: 1:50; IP: 1:10-50

Properties

Stability & Storage: Store at -20°C or -80°C for 12 months. Avoid repeated freeze-thaw cycles.

Shipping: Shipping with blue ice.

Antigen Details

Immunogen: A synthesized peptide: N-terminal human P2Y6

Antigen Species: human

Uniprot ID: Q15077

Synonyms: Pyrimidinergic receptor P2Y, G protein coupled, 6;P2RY6_HUMAN;Purinergic receptor P2Y6; pyrimidinergic receptor P2Y;PP2891;P2ry6;MGC15335;P2Y purinoceptor 6;G coupled nucleotide receptor;P2Y6 receptor;P2 purinoceptor;G protein coupled 6;P2Y6

Research Background

The product of this gene, P2Y6, belongs to the family of G-protein coupled receptors. This family has several receptor subtypes with different pharmacological selectivity, which overlaps in some cases, for various adenosine and uridine nucleotides. This receptor is responsive to UDP, partially responsive to UTP and ADP, and not responsive to ATP. Four transcript variants encoding the same isoform have been identified for this gene.

Inhibitor · Natural Compounds · Compound Libraries · Recombinant Proteins

This product is for Research Use Only · Not for Human or Veterinary or Therapeutic Use

Tel:781-999-4286 E_mail:info@targetmol.com Address:34 Washington Street,Wellesley Hills,MA 02481