

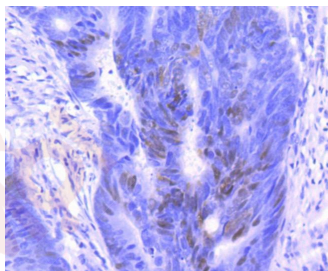
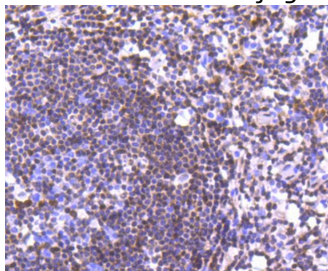
## Anti-CDKN1B Antibody (9B660)

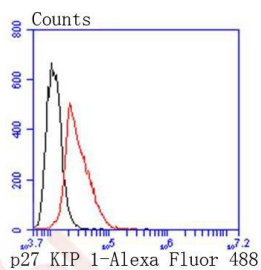
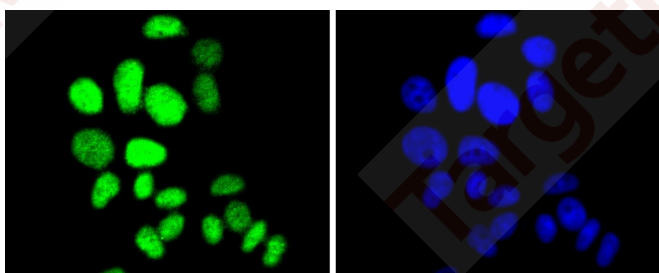
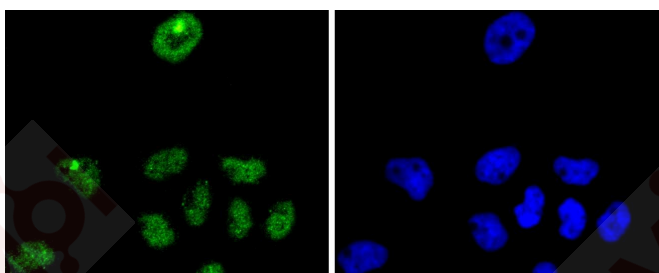
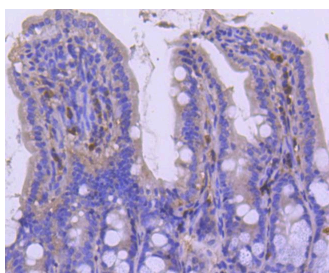
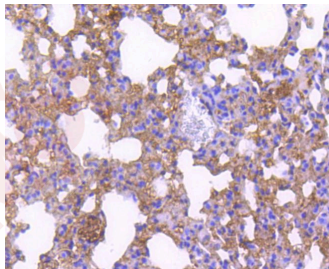
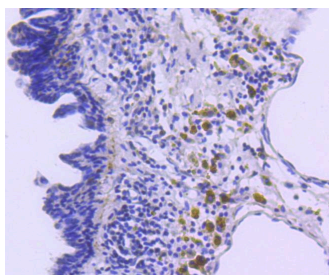
### Product Details

Ig Type:	IgG
Reactivity:	Human,Rat
Conjugation:	Unconjugated
Molecular Weight:	Theoretical: 27 kDa.
Clone:	9B660
Purification:	ProA affinity purified

### Applications

1. Immunohistochemical analysis of paraffin-embedded human tonsil tissue using anti-p27 KIP 1 antibody. Counter stained with hematoxylin.
2. Immunohistochemical analysis of paraffin-embedded human colon cancer tissue using anti-p27 KIP 1 antibody. Counter stained with hematoxylin.
3. Immunohistochemical analysis of paraffin-embedded human breast carcinoma tissue using anti-p27 KIP 1 antibody. Counter stained with hematoxylin.
4. Immunohistochemical analysis of paraffin-embedded mouse lung tissue using anti-p27 KIP 1 antibody. Counter stained with hematoxylin.
- Verified Activity: 5. Immunohistochemical analysis of paraffin-embedded mouse colon tissue using anti-p27 KIP 1 antibody. Counter stained with hematoxylin.
6. ICC staining p27 KIP 1 in A431 cells (green). The nuclear counter stain is DAPI (blue). Cells were fixed in paraformaldehyde, permeabilised with 0.25% Triton X100/PBS.
7. ICC staining p27 KIP 1 in MCF-7 cells (green). The nuclear counter stain is DAPI (blue). Cells were fixed in paraformaldehyde, permeabilised with 0.25% Triton X100/PBS.
8. Flow cytometric analysis of Hela cells with p27 KIP 1 antibody at 1/50 dilution (red) compared with an unlabelled control (cells without incubation with primary antibody; black). Alexa Fluor 488-conjugated goat anti rabbit IgG was used as the secondary antibody.





Application: FCM, ICC/IF, IHC, IP, WB

Recommended WB: 1:1000; IHC: 1:100-500; ICC/IF: 1:100-500; FCM: 1:50-100

### Properties

Stability & Storage: Store at -20°C or -80°C for 12 months. Avoid repeated freeze-thaw cycles.

Shipping: Shipping with blue ice.

---

### Antigen Details

Immunogen: Recombinant Protein

Uniprot ID: P46527

Synonyms: CDKN1B;KIP1;Cyclin-Dependent Kinase Inhibitor p27;Cyclin-Dependent Kinase Inhibitor 1B; p27Kip1

---

### Research Background

Cell cycle progression is regulated by a series of cyclin-dependent kinases consisting of catalytic subunits, designated Cdk, as well as activating subunits, designated cyclins. Orderly progression through the cell cycle requires the activation and inactivation of different cyclin-Cdks at appropriate times. A series of proteins has recently been described that function as "mitotic inhibitors." These include p21, the levels of which are elevated upon DNA damage in G1 in a p53-dependent manner; p16; and a more recently described p16-related inhibitor designated p15. A p21-related protein, p27, has been described as a negative regulator of G1 progression and speculated to function as a possible mediator of TGF $\beta$ -induced G1 arrest. p27 interacts strongly with D-type cyclins and Cdk4 in vitro and, to a lesser extent, with cyclin E and Cdk2.

**Inhibitor · Natural Compounds · Compound Libraries · Recombinant Proteins**

This product is for Research Use Only · Not for Human or Veterinary or Therapeutic Use

Tel: 781-999-4286 E\_mail: info@targetmol.com Address: 34 Washington Street, Wellesley Hills, MA 02481