

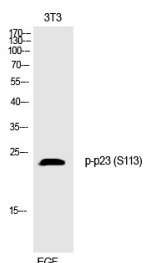
Anti-Phospho-PTGES3 (Ser113) Polyclonal Antibody

Product Details

| | |
|-------------------|---|
| Ig Type: | IgG |
| Reactivity: | Human,Mouse,Rat |
| Conjugation: | Unconjugated |
| Molecular Weight: | Actual: 24 kDa. |
| Purification: | The antibody was affinity-purified from rabbit antiserum by affinity-chromatography using epitope-specific immunogen. |

Applications

Verified Activity: 1. Western Blot analysis of 3T3 cells using Phospho-p23 (S113) Polyclonal Antibody.



Application: ELISA,IHC,WB
Recommended WB: 1:500-2000; IHC: 1:100-300; ELISA: 1:10000

Properties

Stability & Storage: Store at -20°C or -80°C for 12 months. Avoid repeated freeze-thaw cycles.
Shipping: Shipping with blue ice.

Antigen Details

Immunogen: A synthesized phosphopeptide: human p23 around the phosphorylation site of S113
Antigen Species: Human
Uniprot ID: Q15185
Synonyms: PTGES3 (p-S113);PTGES3 (p-Ser113);p-PTGES3 (Ser113);p-PTGES3 (S113)

Inhibitor · Natural Compounds · Compound Libraries · Recombinant Proteins

This product is for Research Use Only. Not for Human or Veterinary or Therapeutic Use

Tel:781-999-4286 E_mail:info@targetmol.com Address:34 Washington Street,Wellesley Hills,MA 02481