

Anti-p16-INK4a Antibody (7Y998)

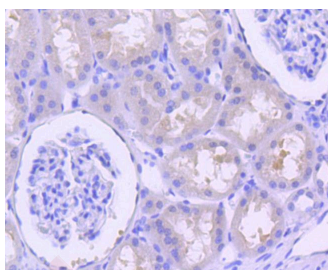
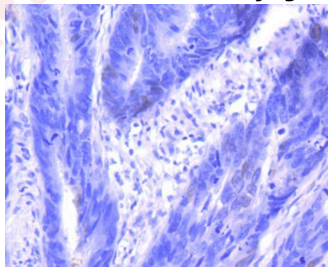
Product Details

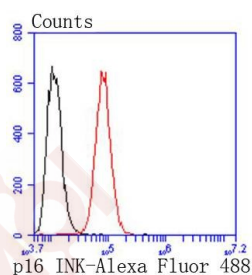
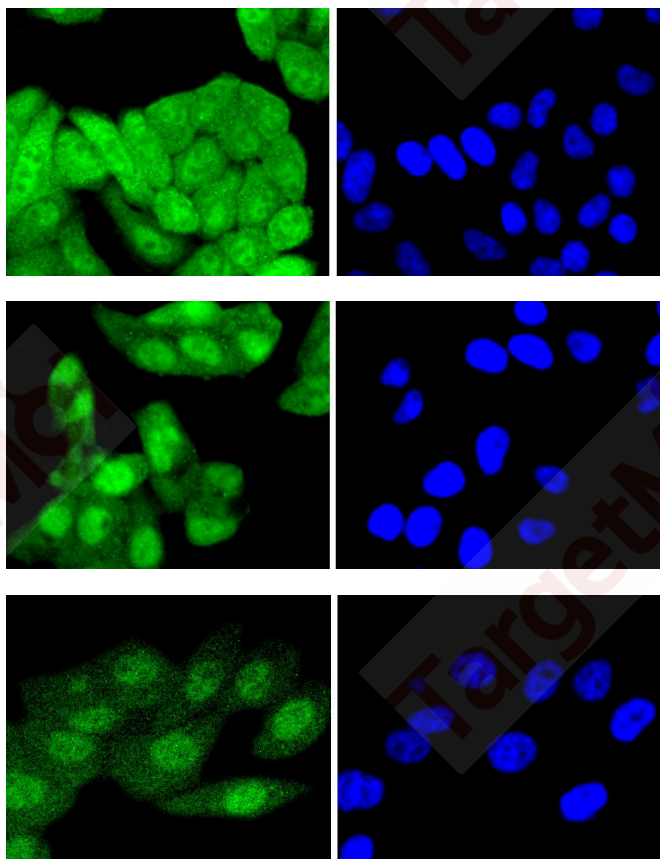
Ig Type:	IgG
Reactivity:	Human
Conjugation:	Unconjugated
Molecular Weight:	Theoretical: 17 kDa.
Clone:	7Y998
Purification:	ProA affinity purified

Applications

Verified Activity:

1. Immunohistochemical analysis of paraffin-embedded human colon cancer tissue using anti-p16INK4A antibody. Counter stained with hematoxylin.
2. Immunohistochemical analysis of paraffin-embedded human kidney tissue using anti-p16INK4A antibody. Counter stained with hematoxylin.
3. ICC staining p16INK4A in HepG2 cells (green). The nuclear counter stain is DAPI (blue). Cells were fixed in paraformaldehyde, permeabilised with 0.25% Triton X100/PBS.
4. ICC staining p16INK4A in Hela cells (green). The nuclear counter stain is DAPI (blue). Cells were fixed in paraformaldehyde, permeabilised with 0.25% Triton X100/PBS.
5. ICC staining p16INK4A in PC-3M cells (green). The nuclear counter stain is DAPI (blue). Cells were fixed in paraformaldehyde, permeabilised with 0.25% Triton X100/PBS.
6. Flow cytometric analysis of Hela cells with p16INK4A antibody at 1/50 dilution (red) compared with an unlabelled control (cells without incubation with primary antibody; black). Alexa Fluor 488-conjugated goat anti rabbit IgG was used as the secondary antibody.





Application: FCM, ICC/IF, IHC, IP, WB

Recommended WB: 1:500-1000; IHC: 1:50-200; ICC/IF: 1:100-500; FCM: 1:50-100

Properties

Stability & Storage: Store at -20°C or -80°C for 12 months. Avoid repeated freeze-thaw cycles.

Shipping: Shipping with blue ice.

Antigen Details

Immunogen: Recombinant Protein

Uniprot ID: P42771

Synonyms: Arf; MTS1; p16; CDK4I; Cyclin dependent kinase inhibitor 2A (p16, inhibits CDK4); cyclin-dependent kinase inhibitor 2a p19Arf; cyclin-dependent kinase inhibitor 2A; cell cycle regulator; cyclin-dependent kinase inhibitor 2a p16Ink4a; cyclin-dependent kinase inhibitor 2A, isoform 2; Cdkn2a; p16-INK4a; cell cycle inhibitor; p19ARF; cyclin-dependent kinase inhibitor 2A, isoform 1; cyclin-dependent kinase 4 inhibitor A; CD2A2; p16Cdkn2a; p16-INK4; INK4A

Research Background

The progression of cells through the cell cycle is regulated by a family of proteins designated cyclin-dependent kinases (Cdks). Sequential activation of individual members of this family and their consequent phosphorylation of critical substrates, promote orderly progression through the cell cycle. The protein p16INK4A, identified as a negative regulator of the cell cycle, has been shown to bind to and inhibit the activity of the Cdk4/cyclin D complex. p19 ARF, which is unrelated to p16, arises from transcription of an alternative reading frame of the p16 gene. Like p16, p19 ARF has been shown to induce cell cycle arrest. Mice lacking p19 ARF but expressing functional p16 have been shown to develop tumors early in life. Further studies have indicated that p19 ARF may be disrupted in a large percentage of human T cell acute lymphoblastic leukemias.

Inhibitor · Natural Compounds · Compound Libraries · Recombinant Proteins

This product is for Research Use Only · Not for Human or Veterinary or Therapeutic Use

Tel: 781-999-4286 E_mail: info@targetmol.com Address: 34 Washington Street, Wellesley Hills, MA 02481