

Anti-Phospho-p16-INK4a (Ser152) Polyclonal Antibody

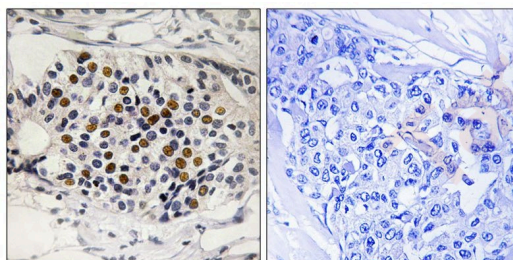
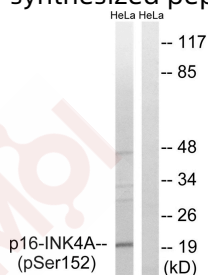
Product Details

Ig Type:	IgG
Reactivity:	Human
Conjugation:	Unconjugated
Molecular Weight:	Actual: 20 kDa.
Purification:	Antibodies were produced by immunizing rabbits with synthetic phosphopeptide and KLH conjugates. Antibodies were purified by affinity-chromatography using epitope-specific phosphopeptide. Non-phospho specific antibodies were removed by chromatography using non-phosphopeptide.

Applications

Verified Activity:

1. Western blot analysis of extracts from HeLa cells, treated with EPO (20U/ml, 15mins), using p16-INK4a (Phospho-Ser152) antibody TMAC-02937. The lane on the right is treated with the synthesized peptide.
2. Immunohistochemistry analysis of paraffin-embedded human breast carcinoma tissue using p16-INK4a (Phospho-Ser152) antibody TMAC-02937. The picture on the right is treated with the synthesized peptide.



Application:	IHC,WB
Recommended	WB: 1:500-3000; IHC: 1:50-100

Properties

Stability & Storage:	Store at -20°C or -80°C for 12 months. Avoid repeated freeze-thaw cycles.
Shipping:	Shipping with blue ice.

Antigen Details

Immunogen: Peptide sequence around phosphorylation site of serine 152 (G-P-S(p)-D-I) derived from Human p16-INK4a

Antigen Species: Human

Uniprot ID: P42771

Synonyms: p-p16-INK4a (Ser152);p16-INK4a (p-S152);p-p16-INK4a (S152);p16-INK4a (p-Ser152)

Research Background

Acts as a negative regulator of the proliferation of normal cells by interacting strongly with CDK4 and CDK6. This inhibits their ability to interact with cyclins D and to phosphorylate the retinoblastoma protein.

Inhibitor · Natural Compounds · Compound Libraries · Recombinant Proteins

This product is for Research Use Only · Not for Human or Veterinary or Therapeutic Use

Tel:781-999-4286 E_mail:info@targetmol.com Address:34 Washington Street,Wellesley Hills,MA 02481