

Anti-p16 ARC Antibody (3G504)

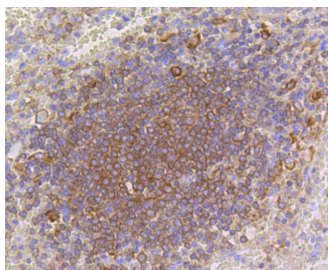
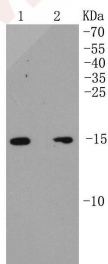
Product Details

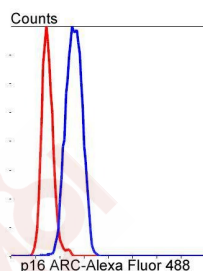
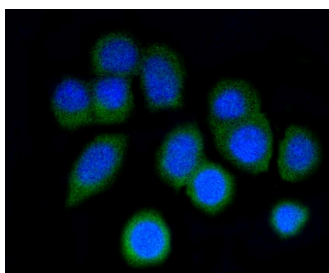
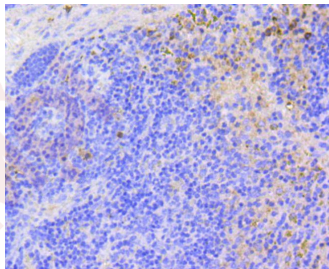
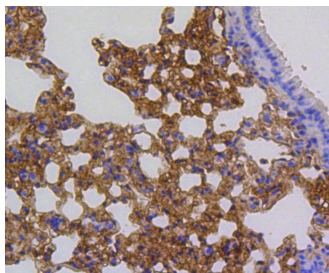
Ig Type:	IgG
Reactivity:	Human,Mouse,Rat
Conjugation:	Unconjugated
Molecular Weight:	Theoretical: 16 kDa.
Clone:	3G504
Purification:	ProA affinity purified

Applications

Verified Activity:

1. Western blot analysis of p16 ARC on different cell lysates using anti-p16 ARC antibody at 1/1,000 dilution. Positive control: Lane 1: MCF-7, Lane 2: SK-BR-3.
2. Immunohistochemical analysis of paraffin-embedded human spleen tissue using anti-p16 ARC antibody. Counter stained with hematoxylin.
3. Immunohistochemical analysis of paraffin-embedded mouse lung tissue using anti-p16 ARC antibody. Counter stained with hematoxylin.
4. Immunohistochemical analysis of paraffin-embedded mouse spleen tissue using anti-p16 ARC antibody. Counter stained with hematoxylin.
5. ICC staining p16 ARC in N2A cells (green). The nuclear counter stain is DAPI (blue). Cells were fixed in paraformaldehyde, permeabilised with 0.25% Triton X100/PBS.
6. Flow cytometric analysis of SH-SY-5Y cells with p16 ARC antibody at 1/50 dilution (blue) compared with an unlabelled control (cells without incubation with primary antibody; red). Alexa Fluor 488-conjugated goat anti rabbit IgG was used as secondary antibody.





Application: FCM,ICC/IF,IHC,IP,WB

Recommended WB: 1:1000-2000; IHC: 1:50-200; ICC/IF: 1:50; FCM: 1:50-100

Properties

Stability & Storage: Store at -20°C or -80°C for 12 months. Avoid repeated freeze-thaw cycles.

Shipping: Shipping with blue ice.

Antigen Details

Immunogen: Recombinant Protein

Uniprot ID: O15511

Synonyms: Actin related protein 2/3 complex subunit 5;p16-ARC;Arpc5;ARC16;Actin related protein 2/3 complex subunit 5 (16 kD);Actin-related protein 2/3 complex subunit 5;MGC88523;p 16 ARC; Arp2/3 protein complex subunit p16;ARPC5_HUMAN;p16 Arc;Arp2/3 complex 16 kDa subunit; ARPC 5;dj127C7.3;RP1 127C7.3;Actin related protein 2/3 complex, subunit 5 16kDa

Research Background

The Arp2/3 (Actin-related protein 2/3) complex consists of seven subunits, all of which are actin-related proteins. The complex is involved in the control of actin polymerization and in mediating the formation of branched actin networks. p16-ARC, also known as ARPC5 (Actin-related protein 2/3 complex subunit 5) or ARC16 (Arp2/3 complex 16 kDa subunit), is a 151 amino acid subunit of the Arp2/3 complex. Thought to play a role in maintaining the integrity of Arp2/3, p16-ARC is a substrate for MAPKAPK-2 which, through phosphorylation of p16-ARC, may participate in Arp2/3 regulatory functions and remodeling of the Actin cytoskeleton. Two isoforms of p16-ARC exist due to alternative splicing events.

Inhibitor · Natural Compounds · Compound Libraries · Recombinant Proteins

This product is for Research Use Only · Not for Human or Veterinary or Therapeutic Use

Tel:781-999-4286 E_mail:info@targetmol.com Address:34 Washington Street,Wellesley Hills,MA 02481