

## Anti-Phospho-p16 (Ser152) Polyclonal Antibody

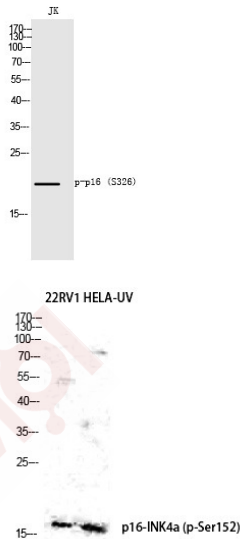
### Product Details

Ig Type:	IgG
Reactivity:	Human
Conjugation:	Unconjugated
Molecular Weight:	Actual: 20 kDa.
Purification:	The antibody was affinity-purified from rabbit antiserum by affinity-chromatography using epitope-specific immunogen.

### Applications

#### Verified Activity:

1. Western Blot analysis of JK cells using Phospho-p16 (S152) Polyclonal Antibody.
2. Western Blot analysis of 22RV1 HELA cells using Phospho-p16 (S152) Polyclonal Antibody.



Application:	ELISA,IHC,WB
Recommended	WB: 1:500-2000; IHC: 1:100-300; ELISA: 1:5000

### Properties

Stability & Storage:	Store at -20°C or -80°C for 12 months. Avoid repeated freeze-thaw cycles.
Shipping:	Shipping with blue ice.

Antigen Details

Immunogen: A synthesized phosphopeptide: human p16 around the phosphorylation site of S152  
Antigen Species: human  
Uniprot ID: P42771  
Synonyms: p16 (p-Ser152);p-p16 (S152);p-p16 (Ser152);p16 (p-S152)

**Inhibitor · Natural Compounds · Compound Libraries · Recombinant Proteins**

This product is for Research Use Only· Not for Human or Veterinary or Therapeutic Use

Tel:781-999-4286 E\_mail:info@targetmol.com Address:34 Washington Street,Wellesley Hills,MA 02481