

Anti-p150 Antibody (3W818)

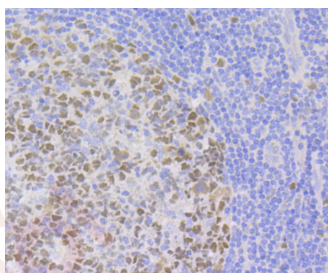
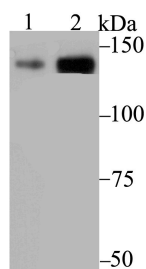
Product Details

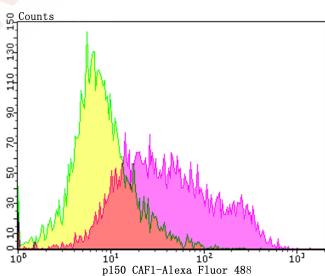
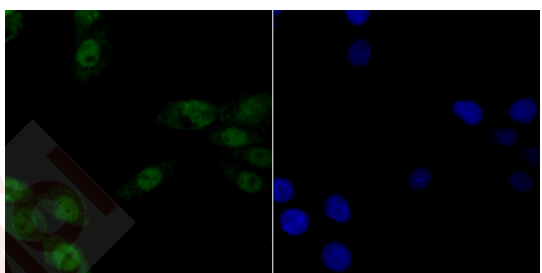
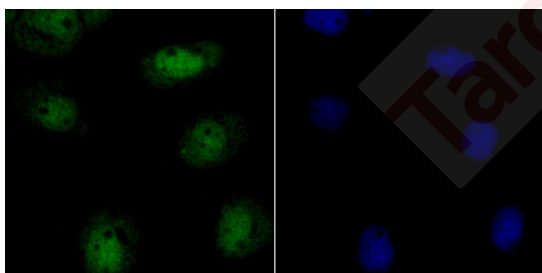
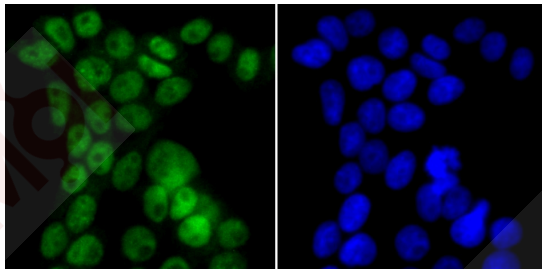
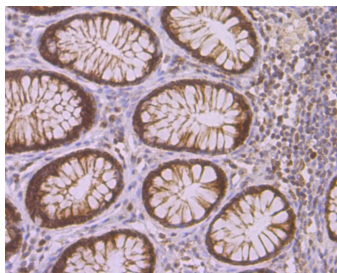
Ig Type:	IgG
Reactivity:	Human
Conjugation:	Unconjugated
Molecular Weight:	Theoretical: 107 kDa.
Clone:	3W818
Purification:	ProA affinity purified

Applications

Verified Activity:

1. Western blot analysis of p150 CAF1 on K562 (1) and A431 (2) cell lysate using anti-p150 CAF1 antibody at 1/1,000 dilution.
2. Immunohistochemical analysis of paraffin-embedded human tonsil tissue using anti-p150 CAF1 antibody. Counter stained with hematoxylin.
3. Immunohistochemical analysis of paraffin-embedded human colon tissue using anti-p150 CAF1 antibody. Counter stained with hematoxylin.
4. ICC staining p150 CAF1 in 293T cells (green). The nuclear counter stain is DAPI (blue). Cells were fixed in paraformaldehyde, permeabilised with 0.25% Triton X100/PBS.
5. ICC staining p150 CAF1 in A431 cells (green). The nuclear counter stain is DAPI (blue). Cells were fixed in paraformaldehyde, permeabilised with 0.25% Triton X100/PBS.
6. ICC staining p150 CAF1 in LOVO cells (green). The nuclear counter stain is DAPI (blue). Cells were fixed in paraformaldehyde, permeabilised with 0.25% Triton X100/PBS.
7. Flow cytometric analysis of Daudi cells with p150 CAF1 antibody at 1/100 dilution (purple) compared with an unlabelled control (cells without incubation with primary antibody; yellow). Alexa Fluor 488-conjugated goat anti-rabbit IgG was used as the secondary antibody.





Application: FCM, ICC, IF, IHC, IP, WB

Recommended WB: 1:500-2000; IHC: 1:50-200; ICC: IF: 1:50-200; IP: 1:10-50; FCM: 1:50-100

Properties

Stability & Storage: Store at -20°C or -80°C for 12 months. Avoid repeated freeze-thaw cycles.

Shipping: Shipping with blue ice.

Antigen Details

Immunogen:	Recombinant Protein: human p150 CAF1 aa 100-300
Antigen Species:	human
Uniprot ID:	Q13111
Synonyms:	DCAF1;hp150;CAF I p150;CAF1A_HUMAN;CAF1B;CAF;Chromatin assembly factor 1 subunit A;P150;CAF-I 150 kDa subunit;MGC71229;CAF I 150 kDa subunit;CAF 1;CAF 1 subunit A;CHAF1A;Chromatin assembly factor I p150 subunit;CAF1P150;Chromatin assembly factor I 150 kDa;CAF1;CAF-1 subunit A;Chromatin assembly factor I (150 kDa);CAF-I p150;Chromatin Assembly Factor 1 Subunit A p150

Research Background

Chromatin assembly factor-1 (CAF-1) is a multisubunit protein complex that comprises three polypeptide subunits known as p150, p60, and p48. CAF-1 is a nucleosome assembly factor that deposits newly synthesized and acetylated Histones H3/H4 into nascent chromatin during DNA replication. The p150 subunit of CAF-1 also supports the maintenance of heterochromatin, which requires the synthesis of both new histones and heterochromatin proteins and their orderly assembly during DNA replication. Heterochromatin is characterized as densely coiled chromatin that generally replicates late during S phase, has a low gene density, and contains large blocks of repetitive DNA that is relatively inaccessible to DNA-modifying reagents. In late S phase, p150 directly associates with heterochromatin associated proteins 1 (HP1 α , HP1 β and HP1 γ). As cells prepare for mitosis, CAF-1 p150 and some HP1 progressively dissociate from heterochromatin, coinciding with the phosphorylation of histone H3. The HP1 proteins reassociate with chromatin at the end of mitosis, as histone H3 is dephosphorylated.

Inhibitor · Natural Compounds · Compound Libraries · Recombinant Proteins

This product is for Research Use Only · Not for Human or Veterinary or Therapeutic Use

Tel:781-999-4286 E_mail:info@targetmol.com Address:34 Washington Street,Wellesley Hills,MA 02481