

Anti-Phospho-p130 Cas (Tyr249) Polyclonal Antibody

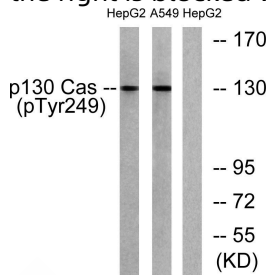
Product Details

Ig Type:	IgG
Reactivity:	Human,Mouse,Rat
Conjugation:	Unconjugated
Molecular Weight:	Actual: 130 kDa.
Purification:	The antibody was affinity-purified from rabbit antiserum by affinity-chromatography using epitope-specific immunogen.

Applications

Verified Activity:

1. Western blot analysis of lysates from HepG2 cells treated with EGF 200ng/ml 30' and A549 cells treated with PMA 125ng/ml 30', using p130 Cas (Phospho-Tyr249) Antibody. The lane on the right is blocked with the phospho peptide.



Application:	ELISA,IF,IHC-P,WB
Recommended	WB: 1:500-2000; IHC-P: 1:100-300; ELISA: 1:10000

Properties

Stability & Storage:	Store at -20°C or -80°C for 12 months. Avoid repeated freeze-thaw cycles.
Shipping:	Shipping with blue ice.

Antigen Details

Immunogen:	A synthesized phosphopeptide: human p130 Cas around the phosphorylation site of Tyr249. AA range:215-264
Antigen Species:	human
Uniprot ID:	P56945
Synonyms:	p130 Cas (p-Tyr249);p-p130 Cas (Tyr249);p-p130 Cas (Y249);p130 Cas (p-Y249)

Research Background

BCAR1, Cas family scaffolding protein(BCAR1) Homo sapiens BCAR1, or CAS, is an Src (MIM 190090) family kinase substrate involved in various cellular events, including migration, survival, transformation, and invasion (Sawada et al., 2006 [PubMed 17129785]).[supplied by OMIM, May 2009],

Inhibitor · Natural Compounds · Compound Libraries · Recombinant Proteins

This product is for Research Use Only · Not for Human or Veterinary or Therapeutic Use

Tel:781-999-4286 E_mail:info@targetmol.com Address:34 Washington Street,Wellesley Hills,MA 02481