

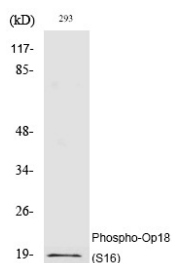
## Anti-Phospho-Stathmin 1 (Ser16) Polyclonal Antibody 2

## Product Details

Ig Type:	IgG
Reactivity:	Human,Mouse,Rat
Conjugation:	Unconjugated
Molecular Weight:	Actual: 17 kDa.
Purification:	The antibody was affinity-purified from rabbit antiserum by affinity-chromatography using epitope-specific immunogen.

## Applications

Verified Activity: 1. Western Blot analysis of 293 cells using Phospho-Op18 (S16) Polyclonal Antibody.



Application: ELISA,IF,IHC,WB

Recommended WB: 1:500-2000; IHC: 1:100-300; IF: 1:200-1000; ELISA: 1:10000

## Properties

Stability & Storage: Store at -20°C or -80°C for 12 months. Avoid repeated freeze-thaw cycles.

Shipping: Shipping with blue ice.

## Antigen Details

Immunogen:	A synthesized phosphopeptide: human Op18 around the phosphorylation site of S16
Antigen Species:	human
Uniprot ID:	P16949
Synonyms:	Stathmin 1 (p-Ser16);p-Stathmin 1 (Ser16);Stathmin 1 (p-S16);p-Stathmin 1 (S16)

**Inhibitor · Natural Compounds · Compound Libraries · Recombinant Proteins**

This product is for Research Use Only. Not for Human or Veterinary or Therapeutic Use

Tel:781-999-4286 E\_mail:info@targetmol.com Address:34 Washington Street,Wellesley Hills,MA 02481