

Anti-OCN Antibody (1S954)

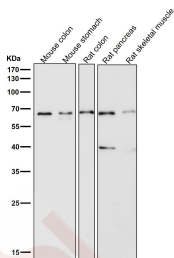
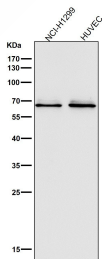
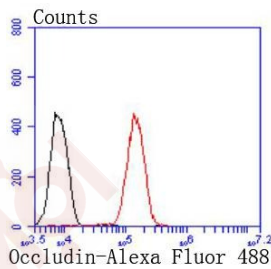
Product Details

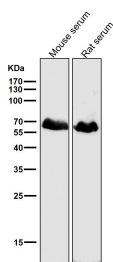
Ig Type:	IgG
Reactivity:	Human,Mouse,Rat
Conjugation:	Unconjugated
Molecular Weight:	Theoretical: 59 kDa.
Clone:	1S954
Purification:	ProA affinity purified

Applications

Verified Activity:

1. Flow cytometric analysis of 293 cells with Occludin antibody at 1/50 dilution (red) compared with an unlabelled control (cells without incubation with primary antibody; black). Alexa Fluor 488-conjugated goat anti rabbit IgG was used as the secondary antibody.
2. All lanes use the Antibody at 1:1000 dilution for 1 hour at room temperature.
3. All lanes use the Antibody at 1:1000 dilution for 1 hour at room temperature.
4. All lanes use the Antibody at 1:1000 dilution for 1 hour at room temperature.





Application: FCM,IP,WB

Recommended WB: 1:1000; FCM: 1:50-100

Properties

Stability & Storage: Store at -20°C or -80°C for 12 months. Avoid repeated freeze-thaw cycles.

Shipping: Shipping with blue ice.

Antigen Details

Immunogen: Recombinant Protein

Uniprot ID: Q16625

Synonyms: FLJ08163;FLJ77961;Tight junction protein occludin;FLJ94056;FLJ18079;MGC34277;Occludin;Occludin1;Occludin, Occludin-1;BLCPMG

Research Background

Occludin is an integral membrane protein closely associated with the tight junctions of epithelial and endothelial cells. Occludin is a tetraspan integral membrane protein in epithelial and endothelial tight junction (TJ) structures that can contain two extracellular loops. The protein exists in a variety of phosphorylated forms. Phosphorylation is involved in regulating both the localization and the function of occludin. Expression of occludin is up-regulated by poly-unsaturated fatty acids, increasing transendothelial cell resistance and reducing cellular permeability to large molecules. The level of occludin varies greatly depending on tissue; in brain tissue, occludin is highly expressed at cell-cell contact sites. Non-neural tissues show lower expression and discontinuous distribution. Up-regulation of epithelial occludin may play a role in enhancing paracellular permeability and be related to the damage to the tight junction.

Inhibitor · Natural Compounds · Compound Libraries · Recombinant Proteins

This product is for Research Use Only · Not for Human or Veterinary or Therapeutic Use

Tel:781-999-4286 E_mail:info@targetmol.com Address:34 Washington Street,Wellesley Hills,MA 02481
