

Anti-NXF1 Antibody (9M897)

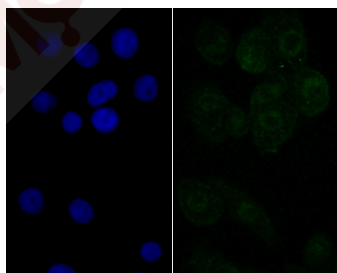
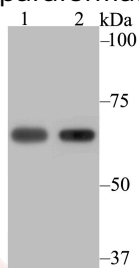
Product Details

Ig Type:	IgG
Reactivity:	Human
Conjugation:	Unconjugated
Molecular Weight:	Theoretical: 70 kDa.
Clone:	9M897
Purification:	ProA affinity purified

Applications

Verified Activity:

- Western blot analysis of NXF1 on 293 (1) and SiHa (2) cell lysate using anti-NXF1 antibody at 1/2,000 dilution.
- ICC staining NXF1 in LOVO cells (green). The nuclear counter stain is DAPI (blue). Cells were fixed in paraformaldehyde, permeabilised with 0.25% Triton X100/PBS.



Application:	ICC,IP,WB
Recommended	WB: 1:500-2000; ICC: 1:50-100; IP: 1:10-50

Properties

Stability & Storage: Store at -20°C or -80°C for 12 months. Avoid repeated freeze-thaw cycles.

Shipping: Shipping with blue ice.

Antigen Details

Immunogen:	Recombinant Protein: within c-terminal human NXF1
Antigen Species:	human
Uniprot ID:	Q9UBU9
Synonyms:	MEX67;nxf 1;Mex67p;TAP;DmNXF1;Mvb1;Protein small bristles;Tip-associating protein;Tip associating protein;Tip-associated protein;DKFZp667O0311;Nuclear RNA export factor 1; MEX67, yeast, homolog of;NXF1_HUMAN;Sbr;mRNA export factor TAP;Nuclear RNA export factor 1 homolog (S. cerevisiae)

Research Background

The constitutive transport element (CTE) of type D retroviruses serves as a signal of nuclear export for unspliced viral RNAs. TAP (tip-associating protein, also known as NXF1) mediates the export of CTE-containing simian type D retroviral RNAs through binding directly to the CTE. TAP is associated with a recognized mRNA export pathway and is a member of the multigene family of NXF proteins. NXF proteins belong to an evolutionarily conserved family of proteins, which are characterized by a leucine-rich-repeat domain (LRR) followed by a region known as the nuclear transport factor 2 (NTF2)-like domain.

Inhibitor · Natural Compounds · Compound Libraries · Recombinant Proteins

This product is for Research Use Only · Not for Human or Veterinary or Therapeutic Use

Tel:781-999-4286 E_mail:info@targetmol.com Address:34 Washington Street,Wellesley Hills,MA 02481