

Anti-NUP153 Antibody (4X360)

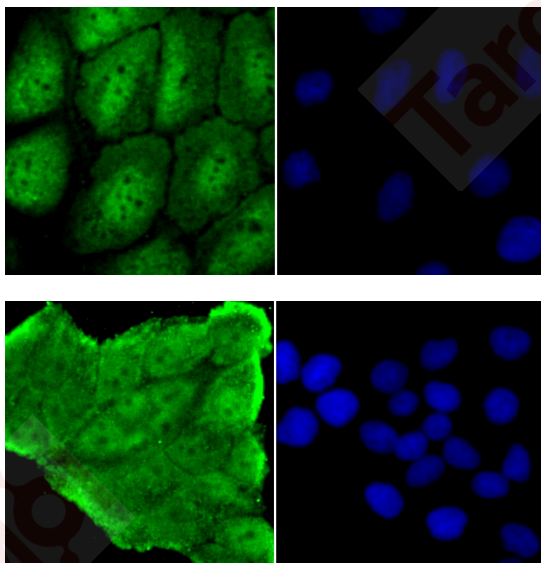
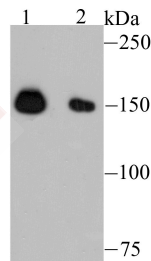
Product Details

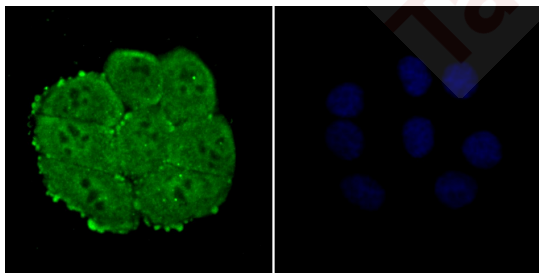
Ig Type:	IgG
Reactivity:	Human
Conjugation:	Unconjugated
Molecular Weight:	Theoretical: 154 kDa.
Clone:	4X360
Purification:	ProA affinity purified

Applications

Verified Activity:

1. Western blot analysis of NUP153 on K562 (1) and HepG2 (2) cell lysate using anti-NUP153 antibody at 1/500 dilution.
2. ICC staining NUP153 in A431 cells (green). The nuclear counter stain is DAPI (blue). Cells were fixed in paraformaldehyde, permeabilised with 0.25% Triton X100/PBS.
3. ICC staining NUP153 in Hela cells (green). The nuclear counter stain is DAPI (blue). Cells were fixed in paraformaldehyde, permeabilised with 0.25% Triton X100/PBS.
4. ICC staining NUP153 in HepG2 cells (green). The nuclear counter stain is DAPI (blue). Cells were fixed in paraformaldehyde, permeabilised with 0.25% Triton X100/PBS.





Application: FCM,ICC/IF,WB

Recommended WB: 1:500-2000; ICC/IF: 1:100-500; FCM: 1:50-100

Properties

Stability & Storage: Store at -20°C or -80°C for 12 months. Avoid repeated freeze-thaw cycles.

Shipping: Shipping with blue ice.

Antigen Details

Immunogen: Recombinant Protein

Uniprot ID: P49790

Synonyms: Nuclear pore complex protein Nup153;153 kDa nucleoporin;Nucleoporin Nup153;NUP 153

Research Background

Nuclear pore complexes (NPCs) are the channels for the bi-directional movement of macromolecules between the nucleus and cytoplasm, and contain more than 100 different subunits. Many of them belong to a family called nucleoporins, which are characterized by the presence of O-linked N-acetylglucosamine moieties and a distinctive pentapeptide repeat (XFXFG). Nup153 is a peripheral NPC component that is implicated in protein and RNP transport and in the interaction of NPCs with the nuclear lamina. Nup153 contains a unique N-terminal region, a central domain consisting of four to five zinc fingers and a C-terminal region containing about 30 irregularly spaced FXFG repeats. Nup153 is cleaved by caspases during apoptosis. Nup153 interacts with TAP, which is essential for mRNA export, and associates with chromatin towards the end of anaphase, in parallel with the inner nuclear membrane protein LAP2. Nup153 is involved in NPC assembly, in anchoring NPCs within the nuclear envelope and in mediating specific nuclear import events.

Inhibitor · Natural Compounds · Compound Libraries · Recombinant Proteins

This product is for Research Use Only · Not for Human or Veterinary or Therapeutic Use

Tel:781-999-4286 E_mail:info@targetmol.com Address:34 Washington Street,Wellesley Hills,MA 02481