

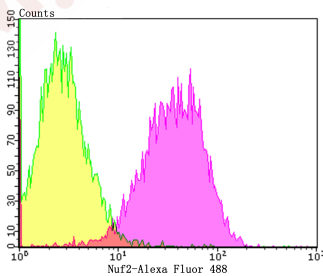
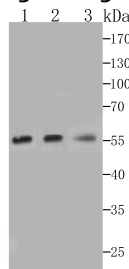
Anti-NUF2 Antibody (5K725)

Product Details

Ig Type:	IgG
Reactivity:	Human
Conjugation:	Unconjugated
Molecular Weight:	Theoretical: 54 kDa.
Clone:	5K725
Purification:	ProA affinity purified

Applications

1. Western blot analysis of Nuf2 on different cell lysates using anti-Nuf2 at 1/1,000 dilution. Positive control: Line 1: K562, Line 2: PC-3M, Line 3: THP-1.
2. Flow cytometric analysis of A431 cells with Nuf2 antibody at 1/50 dilution (purple) compared with an unlabelled control (cells without incubation with primary antibody; yellow). Alexa Fluor 488-conjugated goat anti-rabbit IgG was used as the secondary antibody.



Application:	FCM,WB
Recommended	WB: 1:500-2000; FCM: 1:50-100

Properties

- Stability & Storage: Store at -20°C or -80°C for 12 months. Avoid repeated freeze-thaw cycles.
- Shipping: Shipping with blue ice.

Antigen Details

Immunogen: Recombinant Protein: human Nuf2 aa 1-200
Antigen Species: human
Uniprot ID: Q9BZD4
Synonyms: CDCA1;NUF2R;NUF 2;Kinetochore protein Nuf2;hNuf2;Cell division cycle-associated protein 1; hNuf2R;hsNuf2

Research Background

This gene encodes a protein that is highly similar to yeast Nuf2, a component of a conserved protein complex associated with the centromere. Yeast Nuf2 disappears from the centromere during meiotic prophase when centromeres lose their connection to the spindle pole body, and plays a regulatory role in chromosome segregation. The encoded protein is found to be associated with centromeres of mitotic HeLa cells, which suggests that this protein is a functional homolog of yeast Nuf2. Acts as a component of the essential kinetochore-associated NDC80 complex, which is required for chromosome segregation and spindle checkpoint activity. Required for kinetochore integrity and the organization of stable microtubule binding sites in the outer plate of the kinetochore. The NDC80 complex synergistically enhances the affinity of the SKA1 complex for microtubules and may allow the NDC80 complex to track depolymerizing microtubules.

Inhibitor · Natural Compounds · Compound Libraries · Recombinant Proteins

This product is for Research Use Only · Not for Human or Veterinary or Therapeutic Use

Tel:781-999-4286 E_mail:info@targetmol.com Address:34 Washington Street,Wellesley Hills,MA 02481