

Anti-Nudel Antibody (5F982)

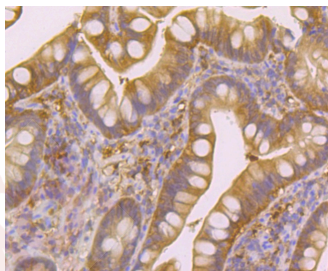
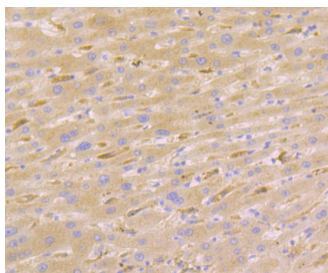
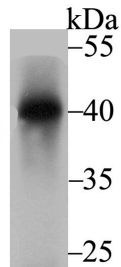
Product Details

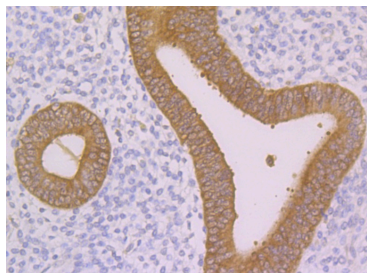
Ig Type:	IgG
Reactivity:	Human,Mouse,Rat
Conjugation:	Unconjugated
Molecular Weight:	Theoretical: 38 kDa.
Clone:	5F982
Purification:	ProA affinity purified

Applications

Verified Activity:

1. Western blot analysis of Nudel on rat brain tissue lysate using anti-Nudel antibody at 1/2,000 dilution.
2. Immunohistochemical analysis of paraffin-embedded human liver cancer tissue using anti-Nudel antibody. Counter stained with hematoxylin.
3. Immunohistochemical analysis of paraffin-embedded human small intestine tissue using anti-Nudel antibody. Counter stained with hematoxylin.
4. Immunohistochemical analysis of paraffin-embedded human uterus tissue using anti-Nudel antibody. Counter stained with hematoxylin.





Application: IHC,WB

Recommended WB: 1:500-2000; IHC: 1:50-200

Properties

Stability & Storage: Store at -20°C or -80°C for 12 months. Avoid repeated freeze-thaw cycles.

Shipping: Shipping with blue ice.

Antigen Details

Uniprot ID: Q9GZM8

Synonyms: Nuclear distribution protein nudE like 1;DKFZp451M0318;Mitosis associated protein 1;A. nidulans;Ndel 1;Protein Nudel;NudE nuclear distribution gene E homolog like 1 A. nidulans; Nuclear distribution gene E like homolog 1;Mitosis-associated protein 1;ENDOOLIGOPEPTIDASE A;NDEL1;MITAP 1;NUDEL;NDEL1_HUMAN;NUDE like protein;Mitosis associated protein MITAP1; NudE nuclear distribution gene E homolog like 1;MITAP1;EOPA;Nuclear distribution protein nudE-like 1

Research Background

NudE-like protein (Ndel1) is expressed in the testis, brain, heart, hypothalamus, liver, lung, spleen, and stomach, specifically in the interphase centrosome and mitotic spindle. It positively regulates minus-end directed dynein. Evidence suggests that Ndel1 interacts with LIS1 to sustain the function of dynein, thereby impacting microtubule organization, nuclear translocation, and neuronal positioning. Ndel1 is phosphorylated during mitosis and seems to tether dynactin and dynein to the mother centriole for microtubule anchoring. Loss of function of Ndel1 in the developing neocortex impairs neuronal positioning and uncouples the centrosome and nucleus. Ndel1 may also impair mitochondrial transport or function, initiating a cascade of events culminating in psychiatric illness such as lissencephaly and schizophrenia.

Inhibitor · Natural Compounds · Compound Libraries · Recombinant Proteins

This product is for Research Use Only · Not for Human or Veterinary or Therapeutic Use

Tel:781-999-4286 E_mail:info@targetmol.com Address:34 Washington Street,Wellesley Hills,MA 02481