

## Anti-Phospho-NUDC (Ser326) Polyclonal Antibody

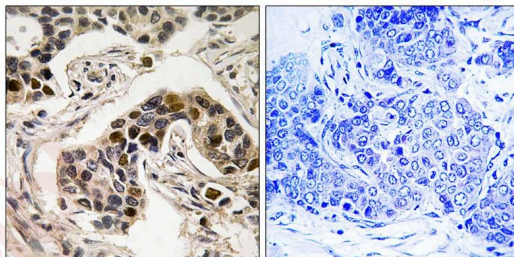
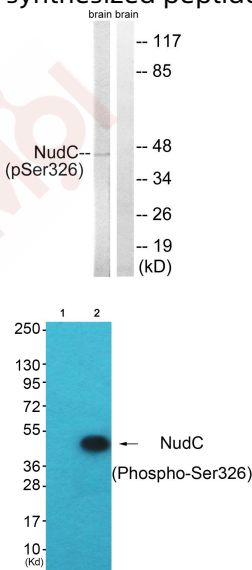
### Product Details

**Ig Type:** IgG  
**Reactivity:** Human, Mouse, Rat  
**Conjugation:** Unconjugated  
**Molecular Weight:** Actual: 45 kDa.  
**Purification:** Antibodies were produced by immunizing rabbits with synthetic phosphopeptide and KLH conjugates. Antibodies were purified by affinity-chromatography using epitope-specific phosphopeptide. Non-phospho specific antibodies were removed by chromatography using non-phosphopeptide.

### Applications

**Verified Activity:**

- Western blot analysis of extracts from rat brain cells, using NudC (Phospho-Ser326) antibody TMAC-02899. The lane on the right is treated with the synthesized peptide.
- Western blot analysis of extracts from HepG2 cells (Lane 2), using NudC (Phospho-Ser326) Antibody TMAC-02899. The lane on the left is treated with synthesized peptide.
- Immunohistochemistry analysis of paraffin-embedded human breast carcinoma tissue using NudC (Phospho-Ser326) antibody TMAC-02899. The picture on the right is treated with the synthesized peptide.



**Application:** IHC, WB  
**Recommended:** WB: 1:500-3000; IHC: 1:50-100

### Properties

Stability & Storage: Store at -20°C or -80°C for 12 months. Avoid repeated freeze-thaw cycles.

Shipping: Shipping with blue ice.

---

### Antigen Details

Immunogen: Peptide sequence around phosphorylation site of serine 326 (D-F-S(p)-K-A) derived from Human NudC

Antigen Species: human

Uniprot ID: Q9Y266

Synonyms: NUDC (p-Ser326);p-NUDC (S326);p-NUDC (Ser326);NUDC (p-S326)

---

### Research Background

Plays a role in neurogenesis and neuronal migration By similarity. Necessary for correct formation of mitotic spindles and chromosome separation during mitosis. Necessary for cytokinesis and cell proliferation.

**Inhibitor · Natural Compounds · Compound Libraries · Recombinant Proteins**

This product is for Research Use Only · Not for Human or Veterinary or Therapeutic Use

Tel:781-999-4286 E\_mail:info@targetmol.com Address:34 Washington Street,Wellesley Hills,MA 02481