

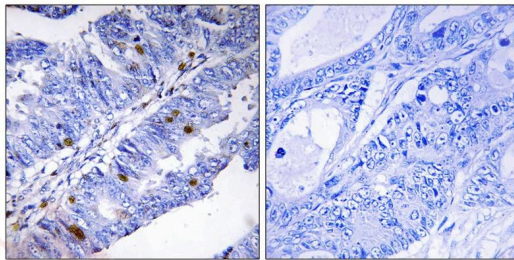
Anti-Phospho-NR4A1 (Ser351) Polyclonal Antibody 2

Product Details

Ig Type:	IgG
Reactivity:	Human,Mouse,Rat
Conjugation:	Unconjugated
Molecular Weight:	Actual: 64 kDa.
Purification:	Antibodies were produced by immunizing rabbits with synthetic phosphopeptide and KLH conjugates. Antibodies were purified by affinity-chromatography using epitope-specific phosphopeptide. Non-phospho specific antibodies were removed by chromatography using non-phosphopeptide.

Applications

Verified Activity: 1. Immunohistochemical analysis of paraffin-embedded human colon carcinoma tissue using Nuclear Receptor NR4A1 (Phospho-Ser351) antibody TMAC-02897 (left) or the same antibody preincubated with blocking peptide (right).



Application:	IHC
Recommended	IHC: 1:50-100

Properties

Stability & Storage:	Store at -20°C or -80°C for 12 months. Avoid repeated freeze-thaw cycles.
Shipping:	Shipping with blue ice.

Antigen Details

Immunogen:	Peptide sequence around phosphorylation site of Serine351(L-P-S(p)-K-P) derived from Human Nuclear Receptor NR4A1
Antigen Species:	human
Uniprot ID:	P22736
Synonyms:	NR4A1 (p-Ser351);p-NR4A1 (S351);NR4A1 (p-S351);p-NR4A1 (Ser351)

Research Background

Orphan nuclear receptor. May act concomitantly with NURR1 in regulating the expression of delayed-early genes during liver regeneration. Binds the NGFI-B response element (NBRE) 5'-AAAAGGTCA-3'. May inhibit NF-kappa-B transactivation of IL2. Participates in energy homeostasis by sequestering the kinase STK11 in the nucleus, thereby attenuating cytoplasmic AMPK activation.

Inhibitor · Natural Compounds · Compound Libraries · Recombinant Proteins

This product is for Research Use Only · Not for Human or Veterinary or Therapeutic Use

Tel:781-999-4286 E_mail:info@targetmol.com Address:34 Washington Street,Wellesley Hills,MA 02481