

Anti-NSE/ENO2 Antibody (8L64)

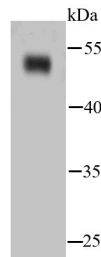
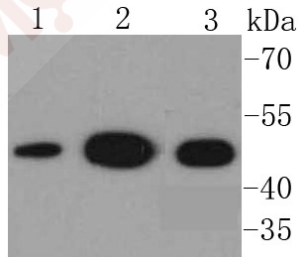
Product Details

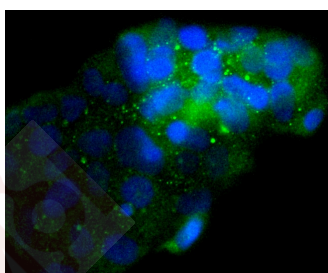
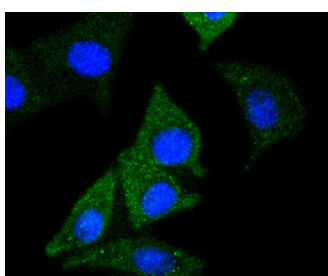
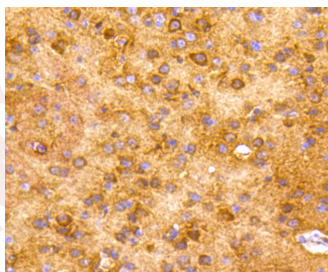
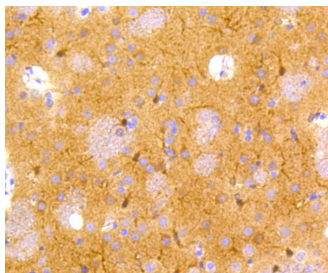
Ig Type:	IgG
Reactivity:	Human,Mouse,Rat,zebrafish
Conjugation:	Unconjugated
Molecular Weight:	Theoretical: 47 kDa.
Clone:	8L64
Purification:	ProA affinity purified

Applications

Verified Activity:

1. Western blot analysis of NSE on different lysates using anti-NSE antibody at 1/1,000 dilution. Positive control: Lane 1: HepG2, Lane 2: Hela, Lane 3: 293.
2. Western blot analysis of NSE on hybrid fish (crucian-carp) brain tissue lysates using anti-NSE antibody at 1/500 dilution.
3. Immunohistochemical analysis of paraffin-embedded rat brain tissue using anti-NSE antibody. Counter stained with hematoxylin.
4. Immunohistochemical analysis of paraffin-embedded human tonsil tissue using anti-NSE antibody. Counter stained with hematoxylin.
5. ICC staining NSE in SH-SY-5Y cells (green). The nuclear counter stain is DAPI (blue). Cells were fixed in paraformaldehyde, permeabilised with 0.25% Triton X100/PBS.
6. ICC staining NSE in 293 cells (green). The nuclear counter stain is DAPI (blue). Cells were fixed in paraformaldehyde, permeabilised with 0.25% Triton X100/PBS.





Application: ICC,IHC,WB

Recommended WB: 1:1000-2000; IHC: 1:50-200; ICC: 1:50-200

Properties

Stability & Storage: Store at -20°C or -80°C for 12 months. Avoid repeated freeze-thaw cycles.

Shipping: Shipping with blue ice.

Antigen Details

Immunogen: Recombinant Protein

Uniprot ID: P09104

Synonyms: enolase 2 (gamma, neuronal);NSE;enolase 2 (γ , neuronal);HEL-S-279

Research Background

Enolases have been characterized as highly conserved cytoplasmic glycolytic enzymes that may be involved in differentiation. Three isoenzymes have been identified, α Enolase, β Enolase and γ Enolase. α Enolase expression has been detected on most tissues, whereas β Enolase is expressed predominantly in muscle tissue and γ Enolase is detected only in nervous tissue. These isoforms exist as both homodimers and heterodimers, and they play a role in converting phosphoglyceric acid to phosphoenolpyruvic acid in the glycolytic pathway.

Inhibitor · Natural Compounds · Compound Libraries · Recombinant Proteins

This product is for Research Use Only · Not for Human or Veterinary or Therapeutic Use

Tel:781-999-4286 E_mail:info@targetmol.com Address:34 Washington Street,Wellesley Hills,MA 02481