

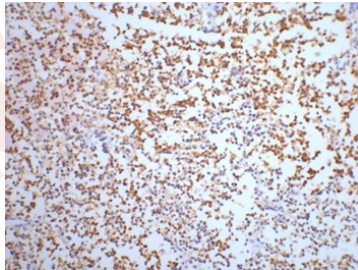
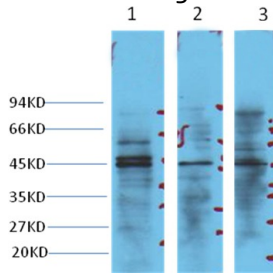
Anti-NSE/ENO2 Antibody (7Z725)

Product Details

Reactivity:	Human, Mouse, Rat
Conjugation:	Unconjugated
Molecular Weight:	Actual: 47 kDa.
Clone:	7Z725
Purification:	Affinity purification using immunogen.

Applications

- Verified Activity:
- Western blot analysis of 1) HeLa, 2) Jurkat, 3) 293T cell lysates, using TMAC-02893 diluted at 1:3,000.
 - IHC staining of human breast cancer tissue with NSE mouse mAb diluted at 1:200.



Application:	IHC, WB
Recommended	WB: 1:1000~1:3000; IHC: 1:200

Properties

Stability & Storage:	Store at -20°C or -80°C for 12 months. Avoid repeated freeze-thaw cycles.
Shipping:	Shipping with blue ice.

Antigen Details

Uniprot ID: P09104

Synonyms: enolase 2 (γ , neuronal);enolase 2 (gamma, neuronal);HEL-S-279;NSE

Research Background

Enolase is a glycolytic enzyme catalyzing the reaction pathway between 2 phospho glycerate and phosphoenol pyruvate. In mammals, enolase molecules are dimers composed of three distinct subunits (alpha, beta and gamma). The alpha subunit is expressed in most tissues and the beta subunit only in muscle. The gamma subunit is expressed primarily in neurons, in normal and in neoplastic neuroendocrine cells. NSE (neuron specific enolase) is found in elevated concentrations in plasma in certain neoplasias. These include pediatric neuroblastoma and small cell lung cancer. Coexpression of NSE and chromogranin A is common in neuroendocrine neoplasms.

Inhibitor · Natural Compounds · Compound Libraries · Recombinant Proteins

This product is for Research Use Only· Not for Human or Veterinary or Therapeutic Use

Tel:781-999-4286 E_mail:info@targetmol.com Address:34 Washington Street,Wellesley Hills,MA 02481