

Anti-NSD3 Antibody (1A959)

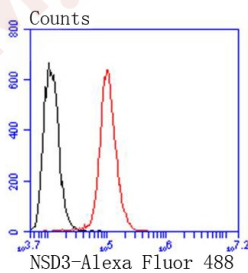
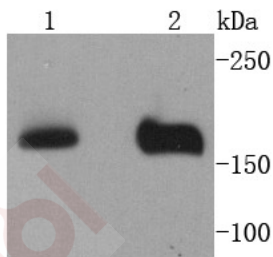
Product Details

Ig Type:	IgG
Reactivity:	Human,Mouse,Rat
Conjugation:	Unconjugated
Molecular Weight:	Theoretical: 162 kDa.
Clone:	1A959
Purification:	ProA affinity purified

Applications

1. Western blot analysis of NSD3 on different lysates using anti-NSD3 antibody at 1/1,000 dilution. Positive control: Lane 1: MCF-7, Lane 2: 293T.
2. Flow cytometric analysis of Hela cells with NSD3 antibody at 1/50 dilution (red) compared with an unlabelled control (cells without incubation with primary antibody; black). Alexa Fluor 488-conjugated goat anti rabbit IgG was used as the secondary antibody.

Verified Activity:



Application:	FCM,WB
Recommended	WB: 1:1000-2000; FCM: 1:50-100

Properties

- Stability & Storage: Store at -20°C or -80°C for 12 months. Avoid repeated freeze-thaw cycles.
- Shipping: Shipping with blue ice.

Antigen Details

Immunogen:	Recombinant Protein
Uniprot ID:	Q9BZ95
Synonyms:	Histone-lysine N-methyltransferase NSD3;Histone lysine N methyltransferase NSD3;WHSC1L1 protein;Nuclear SET domain-containing protein 3;Whistle;WHSC1 like protein 1;Nuclear SET domain containing protein 3;WHSC1-like protein 1;FLJ20353;DKFZp667H044;Wolf Hirschhorn syndrome candidate 1 like 1;Nuclear set domain containing 3;MGC126766;Wolf-Hirschhorn syndrome candidate 1-like protein 1;NSD3_HUMAN;MGC142029;NSD 3;Protein whistle;pp14328;WHSC1-like 1 isoform 9 with methyltransferase activity to lysine;WHSC1L1

Research Background

The deduced 1,437 amino acid NSD3 protein contains two PWWP domains involved in protein-protein interactions, five PHD-type zinc finger motifs found in chromatin-associated proteins, a SAC (SET-associated cys-rich) domain, a SET domain and a C-terminal C5HCH domain. Two NSD3 variants have been identified. The short variant comprised of 645 amino acids, arises from alternative polyadenylation and exon splicing and contains a single PWWP domain. A longer NSD3 variant, which is only expressed in HeLa cells, is comprised of 1,388 amino acid residues. The human WHSC1L1 gene, which encodes the NSD3 protein, shares 68% and 55% identity with mouse Nsd1 and human WHSC1, respectively. Highest expression of NSD3 is observed in brain, heart and skeletal muscle tissues; lower levels of NSD3 expression are observed in the liver and lungs.

Inhibitor · Natural Compounds · Compound Libraries · Recombinant Proteins

This product is for Research Use Only · Not for Human or Veterinary or Therapeutic Use

Tel:781-999-4286 E_mail:info@targetmol.com Address:34 Washington Street,Wellesley Hills,MA 02481