

## Anti-Podocin Antibody (6Q959)

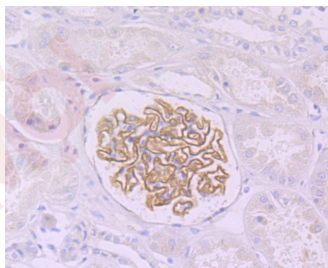
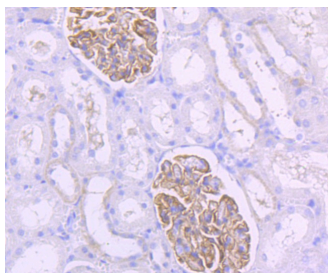
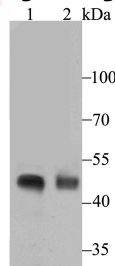
### Product Details

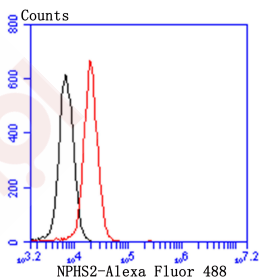
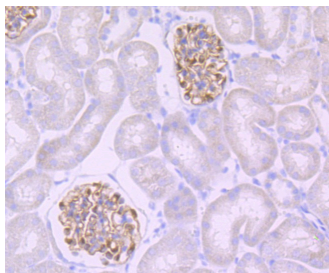
|                   |                        |
|-------------------|------------------------|
| Ig Type:          | IgG                    |
| Reactivity:       | Human,Mouse,Rat        |
| Conjugation:      | Unconjugated           |
| Molecular Weight: | Theoretical: 42 kDa.   |
| Clone:            | 6Q959                  |
| Purification:     | ProA affinity purified |

### Applications

#### Verified Activity:

1. Western blot analysis of NPHS2 on rat kidney (1) and human kidney (2) tissue lysate using anti-NPHS2 antibody at 1/500 dilution.
2. Immunohistochemical analysis of paraffin-embedded rat kidney tissue using anti-NPHS2 antibody. Counter stained with hematoxylin.
3. Immunohistochemical analysis of paraffin-embedded human kidney tissue using anti-NPHS2 antibody. Counter stained with hematoxylin.
4. Immunohistochemical analysis of paraffin-embedded mouse kidney tissue using anti-NPHS2 antibody. Counter stained with hematoxylin.
5. Flow cytometric analysis of 293T cells with NPHS2 antibody at 1/50 dilution (red) compared with an unlabelled control (cells without incubation with primary antibody; black). Alexa Fluor 488-conjugated goat anti-rabbit IgG was used as the secondary antibody.





Application: FCM,IHC,WB  
Recommended WB: 1:500-1000; IHC: 1:50-200; FCM: 1:50-100

### Properties

Stability & Storage: Store at -20°C or -80°C for 12 months. Avoid repeated freeze-thaw cycles.  
Shipping: Shipping with blue ice.

### Antigen Details

Immunogen: Recombinant Protein  
Uniprot ID: Q9NP85  
Synonyms: NPHS2;Podocin

### Research Background

Plays a role in the regulation of glomerular permeability, acting probably as a linker between the plasma membrane and the cytoskeleton. Almost exclusively expressed in the podocytes of fetal and mature kidney glomeruli.

**Inhibitor · Natural Compounds · Compound Libraries · Recombinant Proteins**

This product is for Research Use Only · Not for Human or Veterinary or Therapeutic Use

Tel:781-999-4286 E\_mail:info@targetmol.com Address:34 Washington Street,Wellesley Hills,MA 02481