

Anti-Noxa Antibody (1A221)

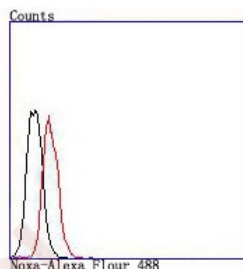
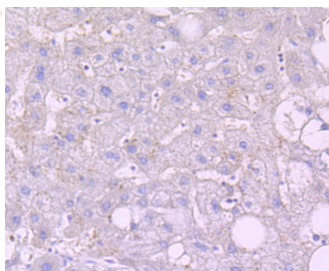
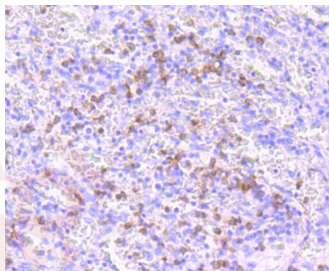
Product Details

Ig Type:	IgG
Reactivity:	Human
Conjugation:	Unconjugated
Molecular Weight:	Theoretical: 6 kDa.
Clone:	1A221
Purification:	ProA affinity purified

Applications

Verified Activity:

1. Immunohistochemical analysis of paraffin-embedded human spleen tissue using anti-Noxa antibody. Counter stained with hematoxylin.
2. Immunohistochemical analysis of paraffin-embedded human liver tissue using anti-Noxa antibody. Counter stained with hematoxylin.
3. Flow cytometric analysis of Jurkat cells with Noxa antibody at 1/100 dilution (red) compared with an unlabelled control (cells without incubation with primary antibody; black).



Application: FCM,IHC,WB

Recommended WB: 1:500; IHC: 1:50-200; FCM: 1:50

Properties

Stability & Storage: Store at -20°C or -80°C for 12 months. Avoid repeated freeze-thaw cycles.

Shipping: Shipping with blue ice.

Antigen Details

Immunogen: Recombinant Protein

Uniprot ID: Q13794

Synonyms: APR_HUMAN;NOXA;Phorbol-12-myristate-13-acetate-induced protein 1;Pmaip1;PMA induced protein 1;PMA-responsive gene;PMA-induced protein 1;Phorbol 12 myristate 13 acetate induced protein 1;Immediate-early-response protein APR;Adult T cell leukemia derived PMA responsive;Protein Noxa;APR;Immediate early response protein APR;ATL-derived

Research Background

Members of the Bcl-2 family of proteins interact to regulate programmed cell death (apoptosis) under a broad range of physiological conditions. Bcl-2, Bcl-xL, and several related proteins inhibit apoptosis, whereas other members of the Bcl-2 family, such as Bax and Bak, enhance cell death. NOXA, a pro-apoptotic member of the Bcl-2 family, contains the Bcl-2 homology 3 (BH3) region, but does not contain other BH domains. Murine cells constitutively express NOXA mRNA in small amounts in various organs; X-ray irradiation increases NOXA mRNA and protein expression levels. In human cells, NOXA, alternatively designated PMA-induced protein 1 or APR, displays high expression in the adult T cell leukemia cell line IKD, where it may function as an immediate-early-response gene. The NOXA protein selectively localizes to mitochondria.

Inhibitor · Natural Compounds · Compound Libraries · Recombinant Proteins

This product is for Research Use Only · Not for Human or Veterinary or Therapeutic Use

Tel:781-999-4286 E_mail:info@targetmol.com Address:34 Washington Street,Wellesley Hills,MA 02481