

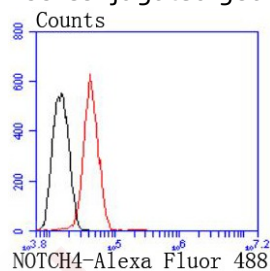
Anti-Notch 4 Antibody (8L466)

Product Details

Ig Type:	IgG
Reactivity:	Human,Mouse
Conjugation:	Unconjugated
Molecular Weight:	Theoretical: 210 kDa.
Clone:	8L466
Purification:	ProA affinity purified

Applications

Verified Activity: 1. Flow cytometric analysis of Hela cells with NOTCH4 antibody at 1/50 dilution (red) compared with an unlabelled control (cells without incubation with primary antibody; black). Alexa Fluor 488-conjugated goat anti rabbit IgG was used as the secondary antibody.



Application:	FCM,WB
Recommended	WB: 1:500-1000; FCM: 1:50-100

Properties

Stability & Storage:	Store at -20°C or -80°C for 12 months. Avoid repeated freeze-thaw cycles.
Shipping:	Shipping with blue ice.

Antigen Details

Immunogen:	Recombinant Protein
Uniprot ID:	Q99466
Synonyms:	Int-3;Notch4;Notch-4;Int3

Research Background

The LIN-12/Notch transmembrane receptors are believed to play a central role in development by regulating cell fate decisions. Four Notch homologs (Notch 1, Notch 2, Notch 3 and Notch 4) have been identified in mammals. The Notch genes are expressed in a variety of embryonic and adult tissues, suggesting that the genes are involved in multiple signaling pathways. Notch proteins have been found to be overexpressed or rearranged in human tumors. Ligands for Notch include Jagged1, Jagged2 and Delta. Jagged1 can activate Notch and prevent myoblast differentiation by inhibiting the expression of muscle regulatory and structural genes. Jagged2 may be involved in tissue development that is dependent upon epithelial-mesenchymal interactions. In addition to its normal

expression in the adrenal gland and placenta, Delta expression has also been found in neuroendocrine tumors.

Inhibitor · Natural Compounds · Compound Libraries · Recombinant Proteins

This product is for Research Use Only · Not for Human or Veterinary or Therapeutic Use

Tel:781-999-4286 E_mail:info@targetmol.com Address:34 Washington Street,Wellesley Hills,MA 02481