

Anti-Notch 1 Antibody (6A911)

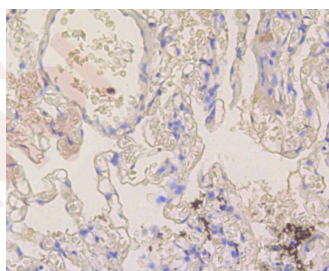
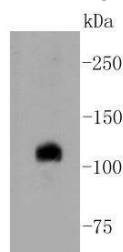
Product Details

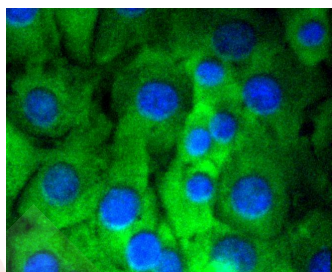
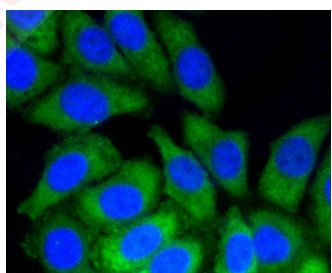
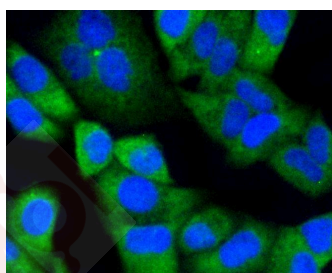
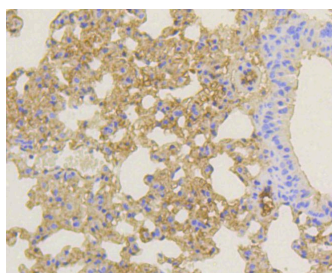
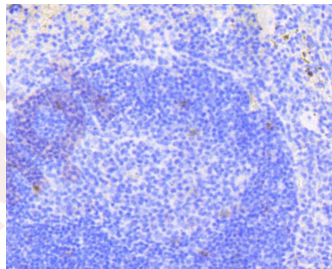
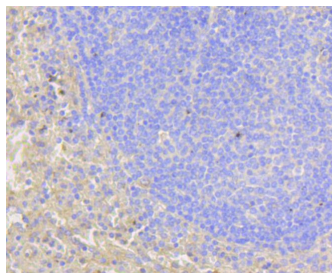
Ig Type:	IgG
Reactivity:	Human,Mouse
Conjugation:	Unconjugated
Molecular Weight:	Theoretical: 125 kDa.
Clone:	6A911
Purification:	ProA affinity purified

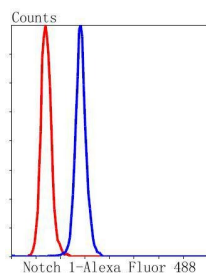
Applications

Verified Activity:

1. Western blot analysis of Notch 1 on HepG2 cell lysates using anti-Notch 1 antibody at 1/1,000 dilution.
2. Immunohistochemical analysis of paraffin-embedded human lung tissue using anti-Notch 1 antibody. Counter stained with hematoxylin.
3. Immunohistochemical analysis of paraffin-embedded human spleen tissue using anti-Notch 1 antibody. Counter stained with hematoxylin.
4. Immunohistochemical analysis of paraffin-embedded mouse spleen tissue using anti-Notch 1 antibody. Counter stained with hematoxylin.
5. Immunohistochemical analysis of paraffin-embedded mouse lung tissue using anti-Notch 1 antibody. Counter stained with hematoxylin.
6. ICC staining Notch 1 in Hela cells (green). The nuclear counter stain is DAPI (blue). Cells were fixed in paraformaldehyde, permeabilised with 0.25% Triton X100/PBS.
7. ICC staining Notch 1 in HepG2 cells (green). The nuclear counter stain is DAPI (blue). Cells were fixed in paraformaldehyde, permeabilised with 0.25% Triton X100/PBS.
8. ICC staining Notch 1 in NIH/3T3 cells (green). The nuclear counter stain is DAPI (blue). Cells were fixed in paraformaldehyde, permeabilised with 0.25% Triton X100/PBS.
9. Flow cytometric analysis of Hela cells with Notch 1 antibody at 1/50 dilution (blue) compared with an unlabelled control (cells without incubation with primary antibody; red). Alexa Fluor 488-conjugated goat anti rabbit IgG was used as the secondary antibody.







Application: FCM,ICC/IF,IHC,IP,WB

Recommended WB: 1:1000-2000; IHC: 1:50-200; ICC/IF: 1:50-200; FCM: 1:50-100

Properties

Stability & Storage: Store at -20°C or -80°C for 12 months. Avoid repeated freeze-thaw cycles.

Shipping: Shipping with blue ice.

Antigen Details

Immunogen: Recombinant Protein

Uniprot ID: P46531

Synonyms: notch 1;AOS5;AOVD1;hN1;TAN1

Research Background

The LIN-12/notch family of transmembrane receptors is believed to play a central role in development by regulating cell fate decisions. To date, four notch homologs have been identified in mammals and have been designated Notch 1, Notch 2, Notch 3 and Notch 4. The notch genes are expressed in a variety of tissues in both the embryonic and adult organism, suggesting that the genes are involved in multiple signaling pathways. The notch proteins have been found to be overexpressed or rearranged in human tumors. Ligands for notch include Jagged1, Jagged2 and Delta. Jagged can activate notch and prevent myoblast differentiation by inhibiting the expression of muscle regulatory and structural genes. Jagged2 is thought to be involved in the development of various tissues whose development is dependent upon epithelial-mesenchymal interactions. Normal Delta expression is restricted to the adrenal gland and placenta. Delta expression has also been found in neuroendocrine tumors such as neuroblastomas and pheochromocytomas.

Inhibitor · Natural Compounds · Compound Libraries · Recombinant Proteins

This product is for Research Use Only · Not for Human or Veterinary or Therapeutic Use

Tel:781-999-4286 E_mail:info@targetmol.com Address:34 Washington Street,Wellesley Hills,MA 02481
