

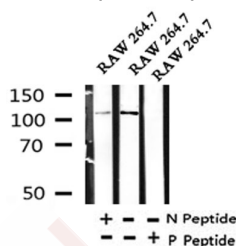
Anti-Phospho-NLRP3 (Ser295) Polyclonal Antibody

Product Details

Ig Type:	IgG
Conjugation:	Unconjugated
Molecular Weight:	Theoretical: 118 kDa.
Purification:	The antibody is from purified rabbit serum by affinity purification via sequential chromatography on phospho- and non-phospho-peptide affinity columns. Antibodies were produced by immunizing rabbits with synthetic phosphopeptide and KLH conjugates. Antibodies were purified by affinity-chromatography using epitope-specific phosphopeptide. Non-phospho specific antibodies were removed by chromatography using non-phosphopeptide.

Applications

Verified Activity: 1. Western blot analysis of Phospho-NLRP3 (Ser295) in lysates of RAW 264.7, using Phospho-NLRP3 (Ser295) Antibody.



Application:	WB
Recommended	WB: 1:500-2000

Properties

Stability & Storage:	Store at -20°C or -80°C for 12 months. Avoid repeated freeze-thaw cycles.
Shipping:	Shipping with blue ice.

Antigen Details

Immunogen:	A synthesized phosphopeptide: human NLRP3 around the phosphorylation site of Ser295
Antigen Species:	human
Uniprot ID:	Q96P20
Synonyms:	NLRP3 (p-S295);NLRP3 (p-Ser295);p-NLRP3 (S295);p-NLRP3 (Ser295)

Inhibitor · Natural Compounds · Compound Libraries · Recombinant Proteins

This product is for Research Use Only. Not for Human or Veterinary or Therapeutic Use

Tel:781-999-4286 E_mail:info@targetmol.com Address:34 Washington Street,Wellesley Hills,MA 02481