

## Anti-NLRP3 Antibody (7T54)

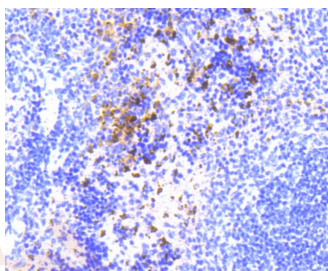
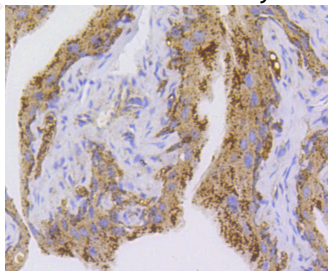
### Product Details

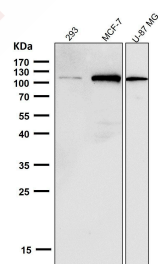
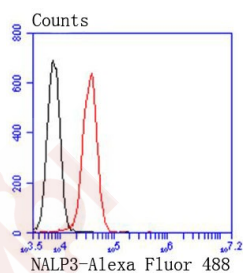
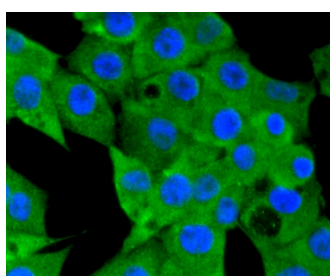
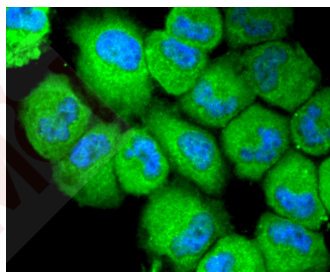
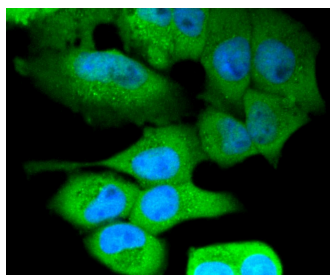
Ig Type:	IgG
Reactivity:	Human,Mouse,Rat
Conjugation:	Unconjugated
Molecular Weight:	Theoretical: 118/85 kDa.
Clone:	7T54
Purification:	ProA affinity purified

### Applications

#### Verified Activity:

1. Immunohistochemical analysis of paraffin-embedded mouse bladder tissue using anti-NLRP3 antibody. Counter stained with hematoxylin.
2. Immunohistochemical analysis of paraffin-embedded mouse spleen tissue using anti-NLRP3 antibody. Counter stained with hematoxylin.
3. ICC staining NLRP3 in Hela cells (green). The nuclear counter stain is DAPI (blue). Cells were fixed in paraformaldehyde, permeabilised with 0.25% Triton X100/PBS.
4. ICC staining NLRP3 in HUVEC cells (green). The nuclear counter stain is DAPI (blue). Cells were fixed in paraformaldehyde, permeabilised with 0.25% Triton X100/PBS.
5. ICC staining NLRP3 in PMVEC cells (green). The nuclear counter stain is DAPI (blue). Cells were fixed in paraformaldehyde, permeabilised with 0.25% Triton X100/PBS.
6. Flow cytometric analysis of Jurkat cells with NLRP3 antibody at 1/50 dilution (red) compared with an unlabelled control (cells without incubation with primary antibody; black). Alexa Fluor 488-conjugated goat anti rabbit IgG was used as the secondary antibody.
7. Western blot analysis of lysates from 293, MCF7 and U-87 MG cells using NLRP3 Rabbit mAb.





Application: FCM, ICC/IF, IHC, IP, WB

Recommended WB: 1:1000; IHC: 1:50-200; ICC/IF: 1:100-500; FCM: 1:50-100

### Properties

Stability & Storage: Store at -20°C or -80°C for 12 months. Avoid repeated freeze-thaw cycles.

Shipping: Shipping with blue ice.

### Antigen Details

Immunogen:	Recombinant Protein
Uniprot ID:	Q96P20
Synonyms:	PYPAF1;LRR and PYD domains-containing protein 3;Angiotensin/vasopressin receptor All/AVP-like;NLRP3;PYRIN-containing APAF1-like protein 1;Cold-induced autoinflammatory syndrome 1 protein;NALP3;Caterpillar protein 1.1 (CLR1.1);Cryopyrin;NACHT, LRR and PYD domains-containing protein 3;C1orf7;CIAS1

---

### Research Background

Cryopyrin interacts selectively with apoptosis-associated specklike protein containing a CARD domain (ASC). This complex may function as an upstream activator of NFkB signaling and caspase-1 activation. The complex also inhibits TNFa induced activation and nuclear translocation of RelA/NFkB p65. Mutations in Cryopyrin and Pyrin proteins are responsible for several autoinflammatory disorders in humans, including familial cold autoinflammatory syndrome (FCAS), Muckle-Wells syndrome (MWS) and chronic infantile neurologic cutaneous and articular syndrome (CINCA).

**Inhibitor · Natural Compounds · Compound Libraries · Recombinant Proteins**

This product is for Research Use Only · Not for Human or Veterinary or Therapeutic Use

Tel:781-999-4286 E\_mail:info@targetmol.com Address:34 Washington Street,Wellesley Hills,MA 02481