

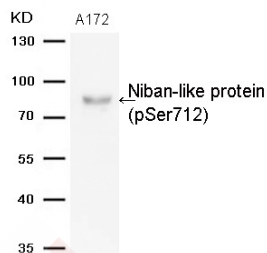
## Anti-Phospho-Niban-like protein (Ser712) Polyclonal Antibody

### Product Details

Ig Type:	IgG
Reactivity:	Human,Mouse
Conjugation:	Unconjugated
Molecular Weight:	Actual: 80 kDa.
Purification:	Antibodies were produced by immunizing rabbits with synthetic phosphopeptide and KLH conjugates. Antibodies were purified by affinity-chromatography using epitope-specific phosphopeptide. Non-phospho specific antibodies were removed by chromatography using non-phosphopeptide.

### Applications

Verified Activity: 1. Western blot analysis of extracts from A172 cells using Niban-like protein (Phospho-Ser712) Antibody TMAC-02844.



Application:	WB
Recommended	WB: 1:500-1000

### Properties

Stability & Storage:	Store at -20°C or -80°C for 12 months. Avoid repeated freeze-thaw cycles.
Shipping:	Shipping with blue ice.

### Antigen Details

Immunogen:	Peptide sequence around phosphorylation site of serine 712 (Q-V-S-S(p)-P) derived from Human Niban-like protein
Antigen Species:	human
Uniprot ID:	Q96TA1
Synonyms:	p-Niban-like protein (Ser712);Niban-like protein (p-Ser712);p-Niban-like protein (S712);Niban-like protein (p-S712)

### Research Background

May play a role in apoptosis suppression. May promote melanoma cell invasion in vitro.

**Inhibitor · Natural Compounds · Compound Libraries · Recombinant Proteins**

This product is for Research Use Only · Not for Human or Veterinary or Therapeutic Use

Tel:781-999-4286 E\_mail:info@targetmol.com Address:34 Washington Street,Wellesley Hills,MA 02481