

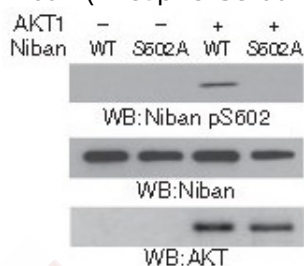
Anti-Phospho-Niban (Ser602) Polyclonal Antibody

Product Details

Ig Type:	IgG
Reactivity:	Human
Conjugation:	Unconjugated
Purification:	Antibodies were produced by immunizing rabbits with synthetic phosphopeptide and KLH conjugates. Antibodies were purified by affinity-chromatography using epitope-specific phosphopeptide. Non-phospho specific antibodies were removed by chromatography using non-phosphopeptide.

Applications

Verified Activity: 1. Western blot analysis in vitro kinase assays were performed by mixing purified bacterially expressed WT His-Niban or the His-Niban S602A with or without purified active AKT1 using Niban (Phospho-Ser602) Antibody TMAC-02843.



Application: WB

Properties

Stability & Storage: Store at 2°C-8°C for 1 month. Store at -20°C or -80°C for 12 months. Avoid repeated freeze-thaw cycles.

Shipping: Shipping with blue ice.

Antigen Details

Immunogen: Peptide sequence around phosphorylation site of serine 602 (R-A-S(p)-A-I) derived from Human Niban

Antigen Species: human

Uniprot ID: Q9BZQ8

Synonyms: p-Niban (Ser602);p-Niban (S602);Niban (p-S602);Niban (p-Ser602)

Research Background

Regulates phosphorylation of a number of proteins involved in translation regulation including EIF2A, EIF4EBP1 and RPS6KB1. May be involved in the endoplasmic reticulum stress response

Inhibitor · Natural Compounds · Compound Libraries · Recombinant Proteins

This product is for Research Use Only · Not for Human or Veterinary or Therapeutic Use

Tel:781-999-4286 E_mail:info@targetmol.com Address:34 Washington Street,Wellesley Hills,MA 02481