

## Anti-NEFH Antibody (9C4)

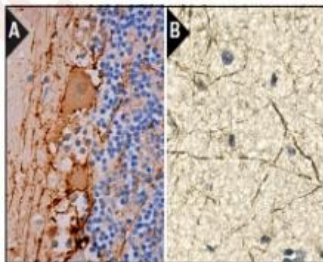
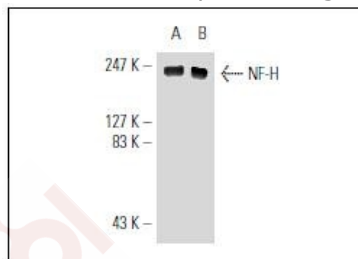
### Product Details

Reactivity:	Human,Mouse,Rat
Conjugation:	Unconjugated
Molecular Weight:	Theoretical: 200 kDa.
Clone:	9C4
Purification:	ProA affinity purified

### Applications

#### Verified Activity:

1. Western blot analysis of NF-H expression in rat brain (A) and mouse brain (B) tissue extracts.
2. Immunoperoxidase staining of formalin fixed, paraffin-embedded human cerebellum tissue showing membrane and cytoplasmic staining of Purkinje cells and neuropil staining in granular layer and molecular layer (A). Immunoperoxidase staining of formalin fixed, paraffin-embedded human cerebellum tissue showing membrane and cytoplasmic staining of Purkinje cells and neuropil staining in granular layer and molecular layer (B).



Application: IF,IHC-P,IP,WB

Recommended WB: 1:500-1000; IHC-P: 1:50-500; IP: 1-2 µg per 100-500 µg of total protein(1 ml of cell lysate)

### Properties

Stability & Storage: Store at -20°C or -80°C for 12 months. Avoid repeated freeze-thaw cycles.

Shipping: Shipping with blue ice.

### Antigen Details

Immunogen:	A neurofilament NF-H protein isolated from a cytoskeletal preparation from brain tissue homogenate of calf origin
Uniprot ID:	P12036
Synonyms:	KIAA0845;Neurofilament heavy polypeptide;NF-H;NFH;Neurofilament triplet H protein;NEFH;200 kDa neurofilament protein

---

### Research Background

Neurofilament-H (NF-H), for neurofilament heavy polypeptide, a member of the intermediate filament family, is a major component of neuronal cytoskeletons. Neurofilaments are dynamic structures; they contain phosphorylation sites for a large number of protein kinases, including protein kinase A, protein kinase C, cyclin-dependent kinase 5, extracellular signal regulated kinase, glycogen synthase kinase-3, and stress-activated protein kinase gamma. In addition to their role in the control of axon caliber, neurofilaments may affect other cytoskeletal elements, such as microtubules and Actin filaments. Changes in neurofilament phosphorylation or metabolism are frequently observed in neurodegenerative diseases, including amyotrophic lateral sclerosis (ALS), Parkinson's disease and Alzheimer's disease.

**Inhibitor · Natural Compounds · Compound Libraries · Recombinant Proteins**

This product is for Research Use Only · Not for Human or Veterinary or Therapeutic Use

Tel:781-999-4286 E\_mail:info@targetmol.com Address:34 Washington Street,Wellesley Hills,MA 02481