

## Anti-ELANE Antibody (2I484)

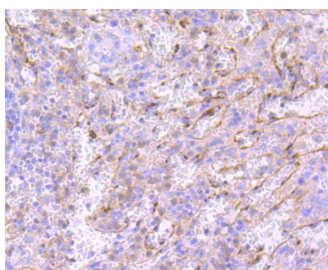
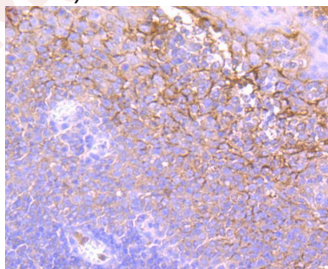
### Product Details

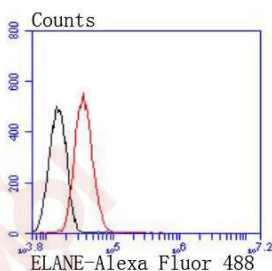
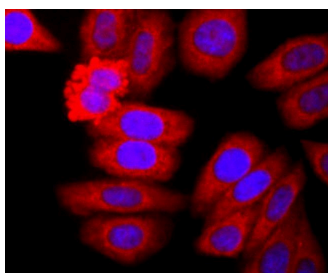
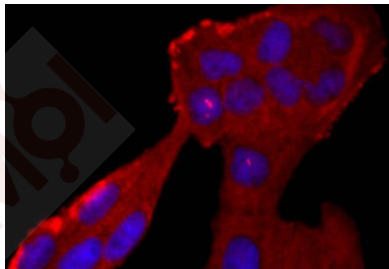
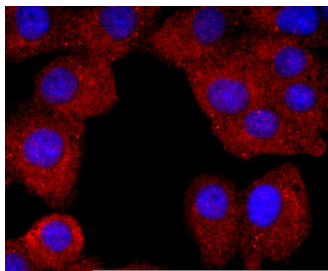
|                   |                        |
|-------------------|------------------------|
| Ig Type:          | IgG                    |
| Reactivity:       | Human                  |
| Conjugation:      | Unconjugated           |
| Molecular Weight: | Theoretical: 29 kDa.   |
| Clone:            | 2I484                  |
| Purification:     | ProA affinity purified |

### Applications

#### Verified Activity:

1. Immunohistochemical analysis of paraffin-embedded human tonsil tissue using anti-Neutrophil Elastase antibody. Counter stained with hematoxylin.
2. Immunohistochemical analysis of paraffin-embedded human spleen tissue using anti-Neutrophil Elastase antibody. Counter stained with hematoxylin.
3. ICC staining Neutrophil Elastase in A549 cells (red). The nuclear counter stain is DAPI (blue). Cells were fixed in paraformaldehyde, permeabilised with 0.25% Triton X100/PBS.
4. ICC staining Neutrophil Elastase in Hela cells (red). The nuclear counter stain is DAPI (blue). Cells were fixed in paraformaldehyde, permeabilised with 0.25% Triton X100/PBS.
5. ICC staining Neutrophil Elastase in HepG2 cells (red). The nuclear counter stain is DAPI (blue). Cells were fixed in paraformaldehyde, permeabilised with 0.25% Triton X100/PBS.
6. Flow cytometric analysis of HepG2 cells with Neutrophil Elastase antibody at 1/50 dilution (red) compared with an unlabelled control (cells without incubation with primary antibody; black). Alexa Fluor 488-conjugated goat anti rabbit IgG was used as the secondary antibody.





Application: FCM, ICC/IF, IHC, WB

Recommended WB: 1:1000; IHC: 1:50-200; ICC/IF: 1:50; FCM: 1:10-50

### Properties

Stability & Storage: Store at -20°C or -80°C for 12 months. Avoid repeated freeze-thaw cycles.

Shipping: Shipping with blue ice.

### Antigen Details

Immunogen: Recombinant Protein

Uniprot ID: P08246

Synonyms: Neutrophil elastase; ELA2; Elastase-2; Medullasin; Human leukocyte elastase (HLE); ELANE; PMN elastase; Bone marrow serine protease

### Research Background

Neutrophil Elastase (NE) is a serine protease that is expressed in bone marrow precursor cells, stored in peripheral blood granulocytes, and implicated in the progression of a variety of inflammatory diseases, including idiopathic pulmonary fibrosis, rheumatoid arthritis, adult respiratory distress syndrome and cystic fibrosis. In neutrophils, Neutrophil Elastase contributes largely to the proteolysis of phagocytosed proteins, the migration of neutrophils and

## A DRUG SCREENING EXPERT

---

the remodeling of tissues following injury. Neutrophil Elastase, which is also designated medullasin, is secreted into the extracellular matrix, where it is then capable of destroying connective tissue proteins, including elastin, proteoglycans and Type IV Collagens. Neutrophil Elastase also mediates proteolysis by cleaving proteins that are associated with the complement system, such as antithrombin and Fibrinogen. Additionally, Neutrophil Elastase functions as a potent platelet agonist, where it potentiates the aggregation, secretion and mobilization of calcium in response to cathepsin G binding to platelet surface receptors.

**Inhibitor · Natural Compounds · Compound Libraries · Recombinant Proteins**

This product is for Research Use Only · Not for Human or Veterinary or Therapeutic Use

Tel:781-999-4286 E\_mail:info@targetmol.com Address:34 Washington Street,Wellesley Hills,MA 02481